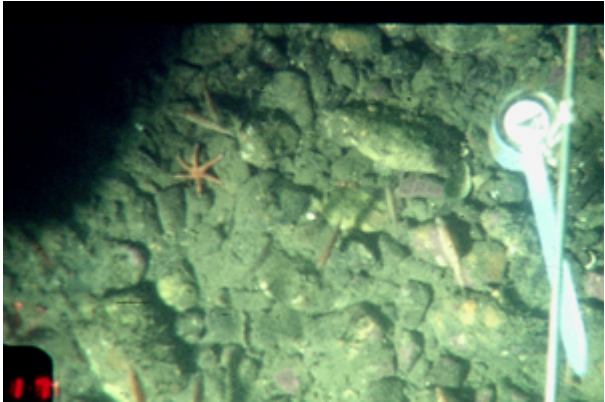
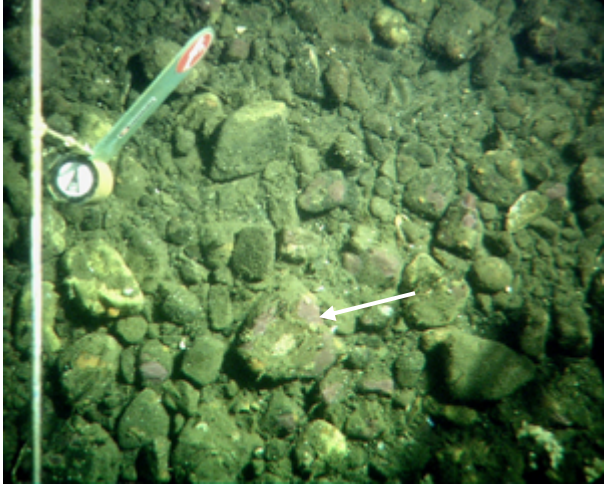


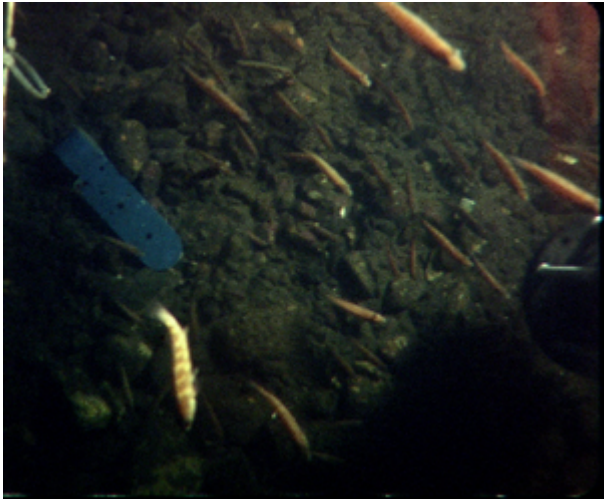


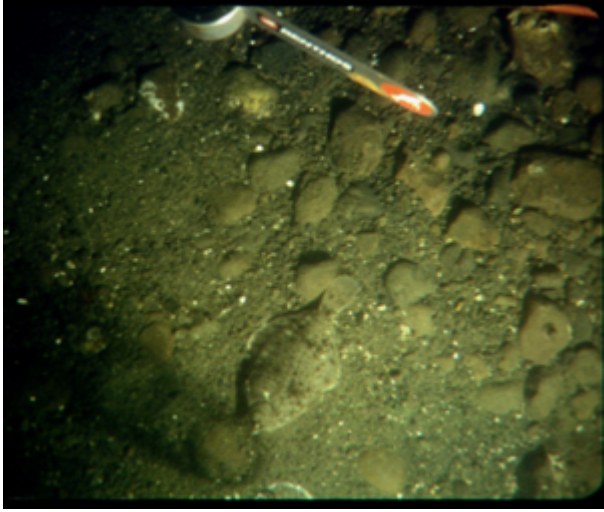


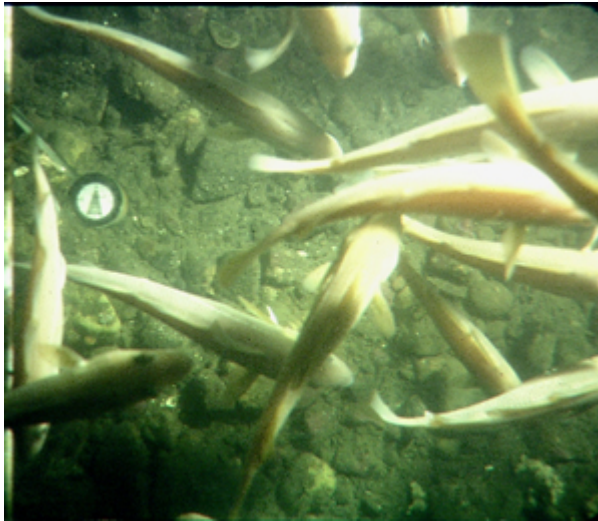
Table 5. Identifications of animals and plants observed in the time-series photographs obtained at LT-A. Examples are from photographs in Butman and others 2008a and 2008b. [GMT, Greenwich Mean Time]

<b>Identification</b> <i>(Latin name)</i>	<b>Photograph</b>	<b>Deployment</b> <b>Frame number</b> <b>Date</b> <b>Time</b>
Blood seastar <i>(Henrecia sanguinolenta)</i> and cunner <i>(Tautoglabrus adsperus)</i>		383 Frame 136 15 July 1991 1252 GMT
Calcareous algae (magenta)		374 Frame 317 02 May 1991 2238 GMT

<p>Calcareous algae and Ocean pout (<i>Macrozoarces americanus</i>)</p>		<p>516 Frame 464 22 April 1998 00:41 GMT</p>
<p>Cancer crab</p>		<p>374 Frame 378 18 May 1991 0419 GMT</p>
<p>Cunner (<i>Tautogolabrus adspersus</i>)</p>		<p>347 Frame 140 14 August 1990 1243 GMT</p>

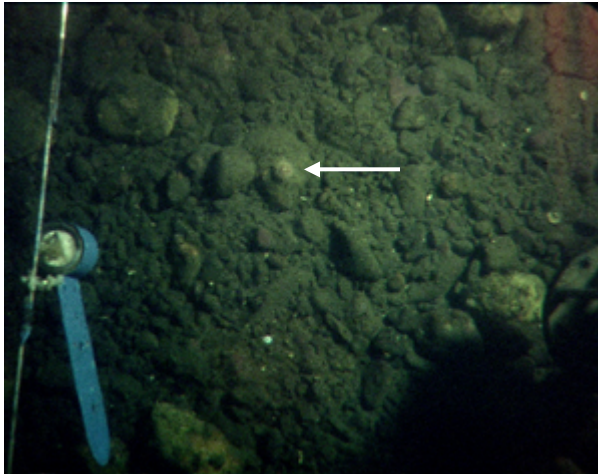
<p>Cunner <i>(Tautoglabrus adsperus)</i></p>		<p>347 Frame 136 13 August 1990 1254 GMT</p>
<p>Finger sponge <i>(Haliclona oculata)</i></p>		<p>347 (frame 004) 11 July 1990 1851 GMT</p>
<p>Flounder</p>		<p>413 Frame 273 16 April 1993 0001 GMT</p>

Family Gadidae  
(species uncertain,  
possibly cod)


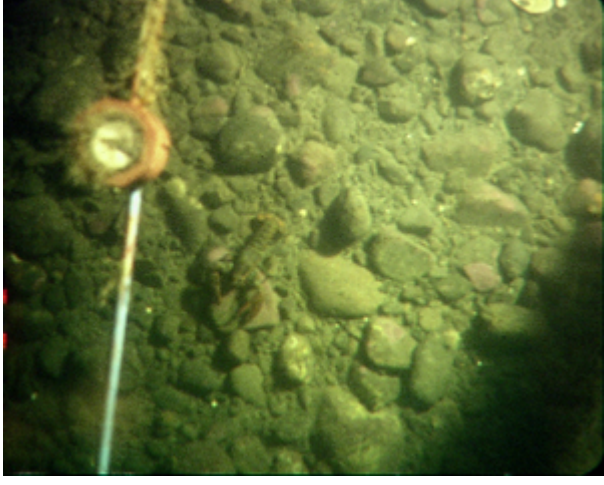
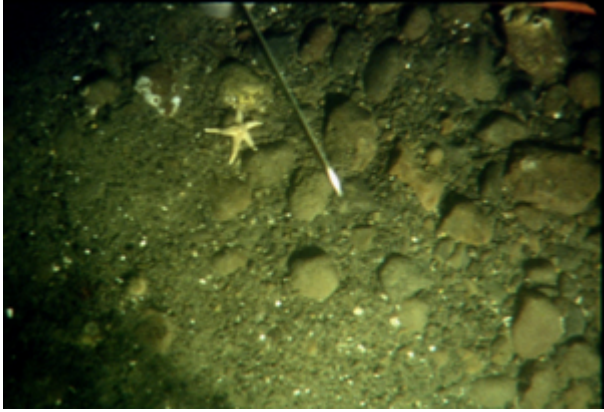


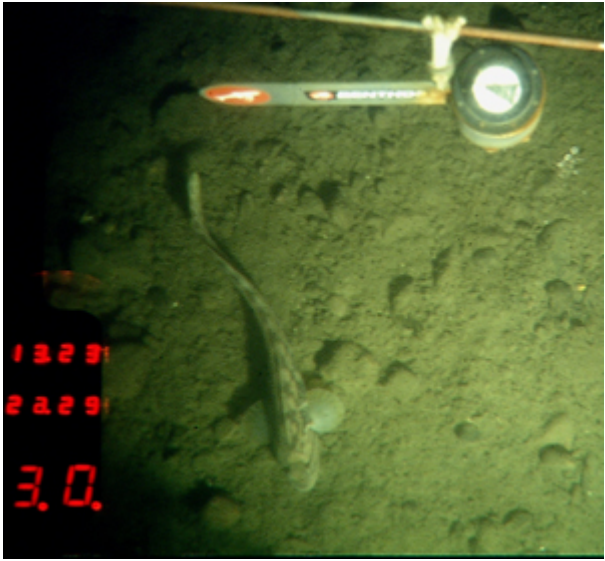
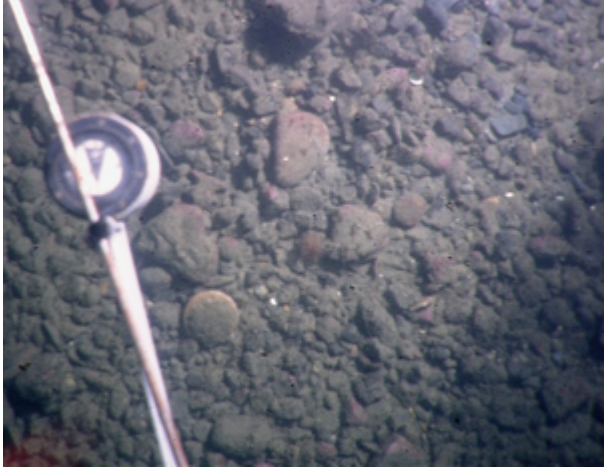
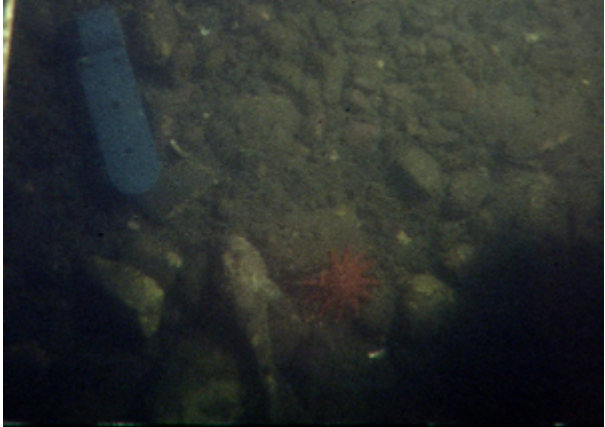
374  
Frame 432  
31 May 1991  
1603 GMT


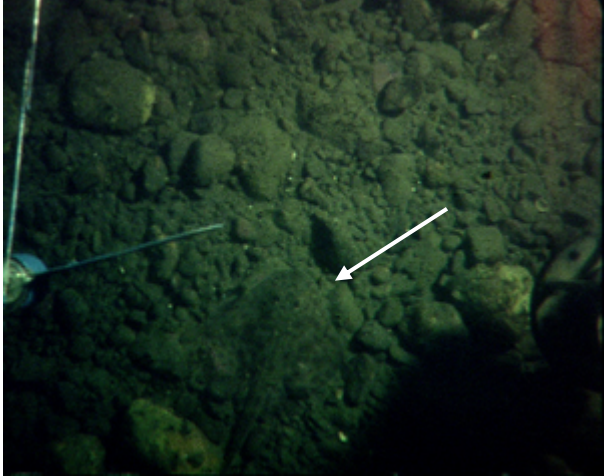
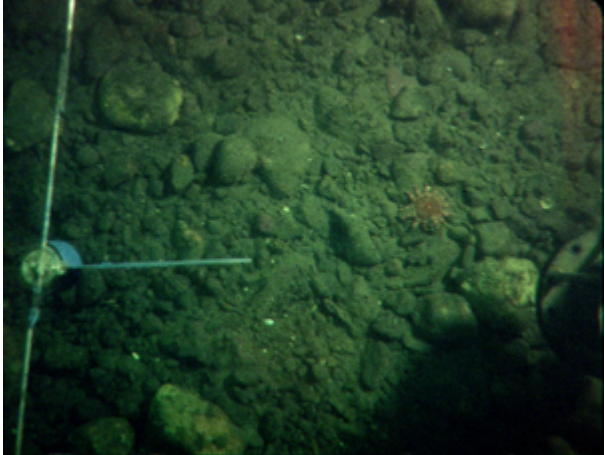
Green sea urchin  
(*Strongylocentrotus*  
*droebachiensis*)



338  
Frame 162  
13 January 1990  
1909 GMT

<p>Hydroids or hydrozoans growing in compass</p>		<p>400 Frame 674 22 Sep 1992 2351 GMT</p>
<p>Lobster (<i>Homarus americanus</i>)</p>		<p>400 Frame 747 5 October 1992 0330 GMT</p>
<p>Northern seastar (<i>Asterias vulgaris</i>)</p>		<p>413 Frame 235 9 April 1993 1636 GMT</p>

<p>Ocean pout (<i>Macrozoarces americanus</i>)</p>		<p>430 Frame 635 30 May 1994 10:19 GMT</p>
<p>Sea scallop (<i>Plactopecten magellanicus</i>)</p>		<p>690 Frame 125 10 June 2002 17:35 GMT</p>
<p>Sculpin (<i>Myoxocephalus</i> sp.) and spiny sunstar (<i>Crassaster papposus</i>)</p>		<p>347 Frame 287 19 September 1990 1807 GMT</p>

<p>Sea raven (<i>Hemitripterus americanus</i>)</p>		<p>462 Frame 212 31 October 1995 14:27 GMT</p>
<p>Skate (<i>Raja</i> sp.)</p>		<p>338 Frame 121 03 January 1990 1557 GMT</p>
<p>Spiny sunstar (<i>Crassaster papposus</i>)</p>		<p>338 Frame 185 19 January 1990 1134 GMT</p>

Spiny sunstar  
(*Crassaster*  
*papposus*)



374  
Frame 101  
9 March 1991  
2343 GMT