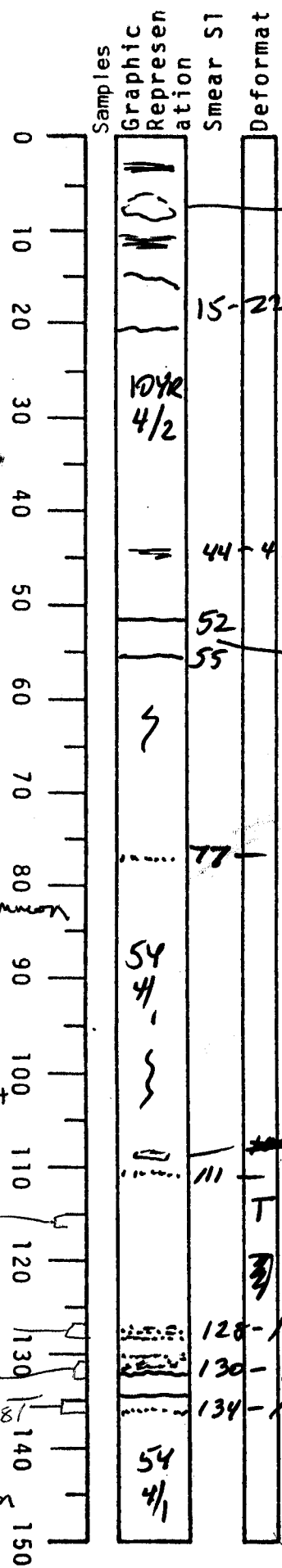


VISUAL CORE DESCRIPTION

LOCATOR		SAMPLE NO.		SEC.
G97-6		PC	10	1&2
STATION#			OBSERVER	
			JED	



3-5 black MnOx lams
 6-7 gray interval
 10-13 black MnOx lams
 15-22 gray interval

[Note:
 Top 20 cm may be somewhat
 disturbed by coring]
 mostly dark yellowish bn
 104R 4/2 foram rich clay

44-45 dk MnOx stain
 52 51-52 faint rusty lams <1mm
 55 52-55 smooth gray clay

52-111 Generally
 olive gray
 54 4/1 clay
 some faint
 burrowing

77 possible tan < st lams

111-136 appears to be
 muddy graded beds
 mostly clay w/ v. thin
 fine st lams at bases
 sharp irreg. bases.

109- silty burros?
 111 1mm st lamina

111-129 smooth gray clay
 graded bed clay → fine st

128-129 st laminae - v. fine w clay
 130-132 fm-silt laminae - sharp irregular
 base
 134-136 graded bed? clay with 1mm lam of
 fine silt at base

136-150 olive gray clay
 some subtle burrows

80
 Gimen common

100
 G. men abdt

12/15/98T

12/15/98T

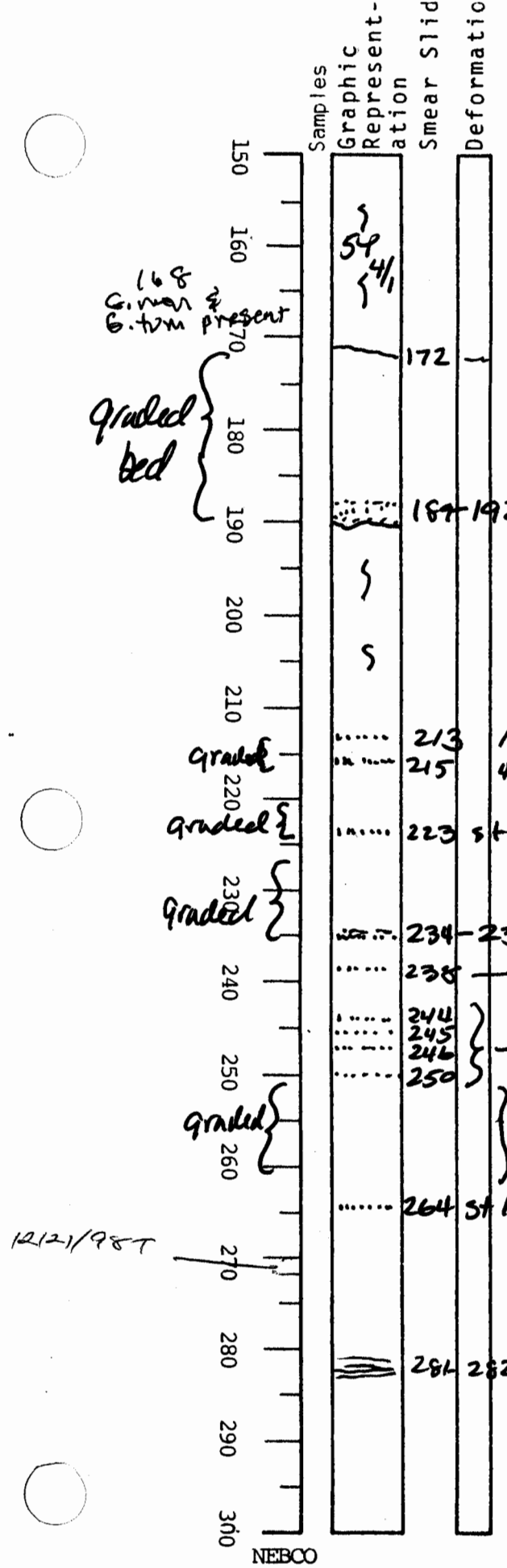
12/15/98T

12/15/98T

140
 G. men
 common

VISUAL CORE DESCRIPTION

LOCATOR				SAMPLE NO.		SEC.
G97-6				PL	10	324
STATION#					OBSERVER	
					JED	



150-172 olive gray clay w/ subta burros

172-192 172-300 is series of graded beds

172-192 smooth gray clay

184-192 graded st lam composed mostly of smooth olive gray clay (5Y 4/1) with sharp base

192-209 may be burrowed thin st laminae at bases as noted

213 1mm st lam

215 4mm st lam mud

223 st lam 3mm mud

234-235 st bed sharp base

238 st lam <1mm

244 } <1mm st lam

245 }

246 }

250 }

264 } mud 264 - base smooth homogeneous gray mud

264 st lam <1mm

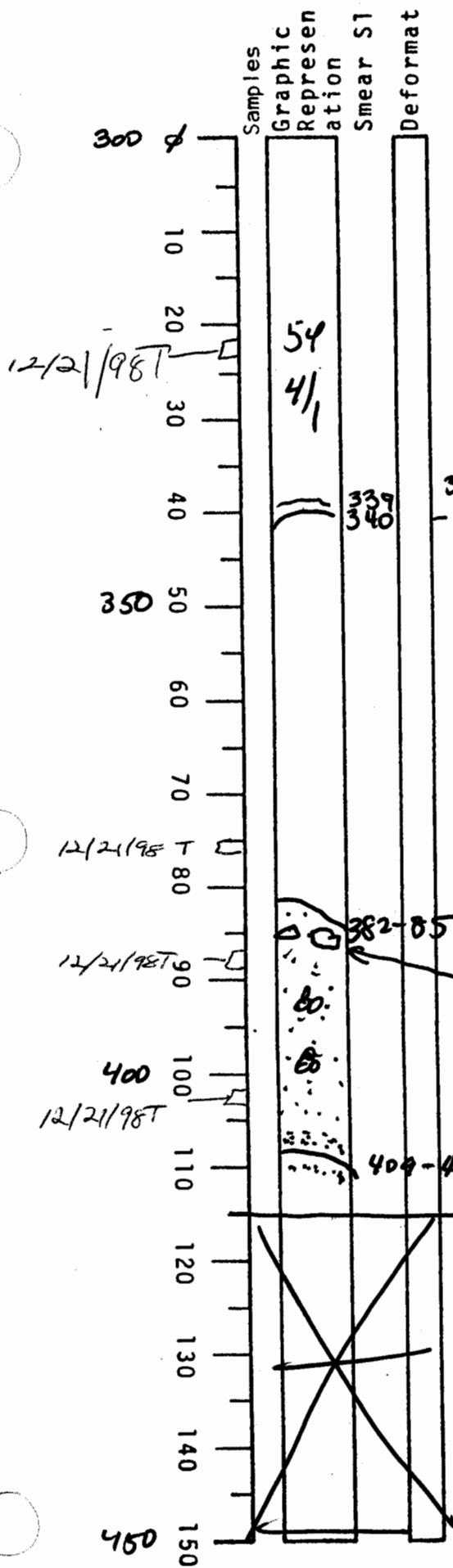
281-282 darker gray stams

12/21/98T

VISUAL CORE DESCRIPTION

3 of 3

LOCATOR				SAMPLE NO.		SEC.
G97	-6			PC	105	6
STATION#					OBSERVER	
					JED	



300-382 smooth homogeneous olve gray mud

bed starts at 264

338-3mm dark lam sharp dipping base
339-340 darker 1cm lam

264 to 382 appears to be a clay turbidite

382-85 angular irreg contact w base of mud
2 1-2 cm dia mud clasts

382-409 appears to be gray silty mud with 2 large mud clasts near top and smaller ones <5mm scattered throughout

409-412 sharp contact at base of bed

silty foram rich lam

415 base of core

406-409 appear graded to base

409-415 gray clay with st lam-410

Coarse fraction in bed from 382-409 is mostly small forams + abundant silt grains