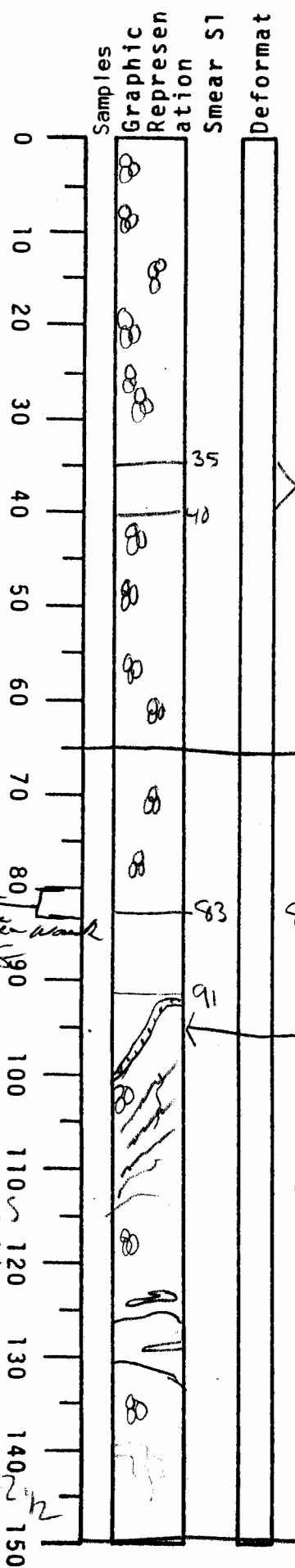


VISUAL CORE DESCRIPTION

1 of 3

LOCATOR				SAMPLE NO.		SEC.
5	9	7	-6	PC	-13	172
STATION#					OBSERVER	
					Eita	



0-35
 dark yellowish brown 10YR 2/1
 clay.
 structureless - soupy
 Forams abundant
 relatively homogeneous clay

gradational contact

40-83 olive gray 5Y 4/1 clay
 structureless - firmer clay than above
 Forams abundant w/ common detrital CF
 uneven coloring

end of section 2

83-150 Forams common but detrital CF = dominate

83-91 olive gray clay 5Y 4/1 with red smudges - randomly oriented and discontinuous (not banded)

3 mm thick band medium-fine silt and slightly darker gray color.
 105 - white shell fragment

91-150 chaotic olive gray clay 5Y 4/1

90-130 alternating lighter & darker gray clays discontinuously and irregularly in vertical chevrons

80-140 - chaotic gray clays
 all w/ 1/2 detrital 1/2 coarse fraction

end of section 2 w/ menardii

130-150 chaotic clay stringers (stamped Holocene clays?)

AMS date work
 2 April, 1988

coarse = 1/2 Forams
 1/2 detrital

menardii common
 coarse has lots of detrital

detrital Forams 1/2

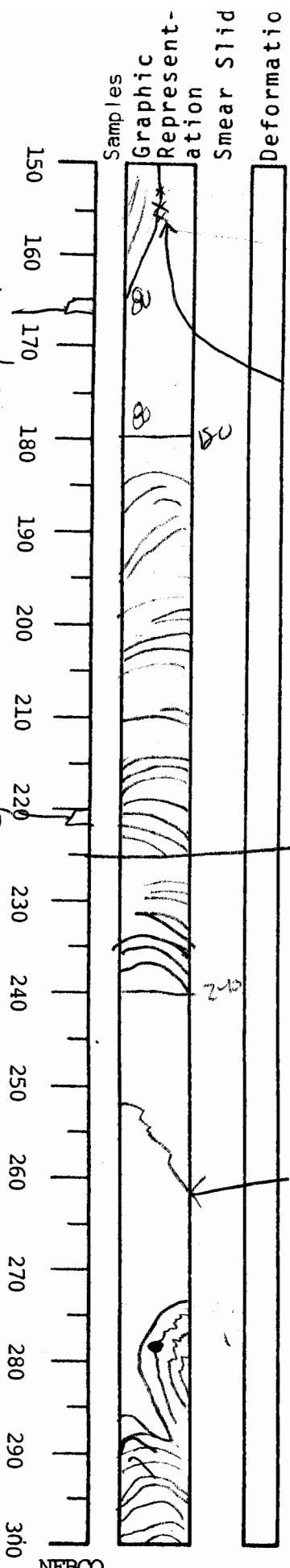
NEBCO

VISUAL CORE DESCRIPTION

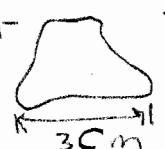
LOCATOR				SAMPLE NO.		SEC.
G97-6				PC-1334		
STATION#				OBSERVER		
				Gita		

1424/98T
175-177 cm
Kuns sample
8/18/98

12/11/98



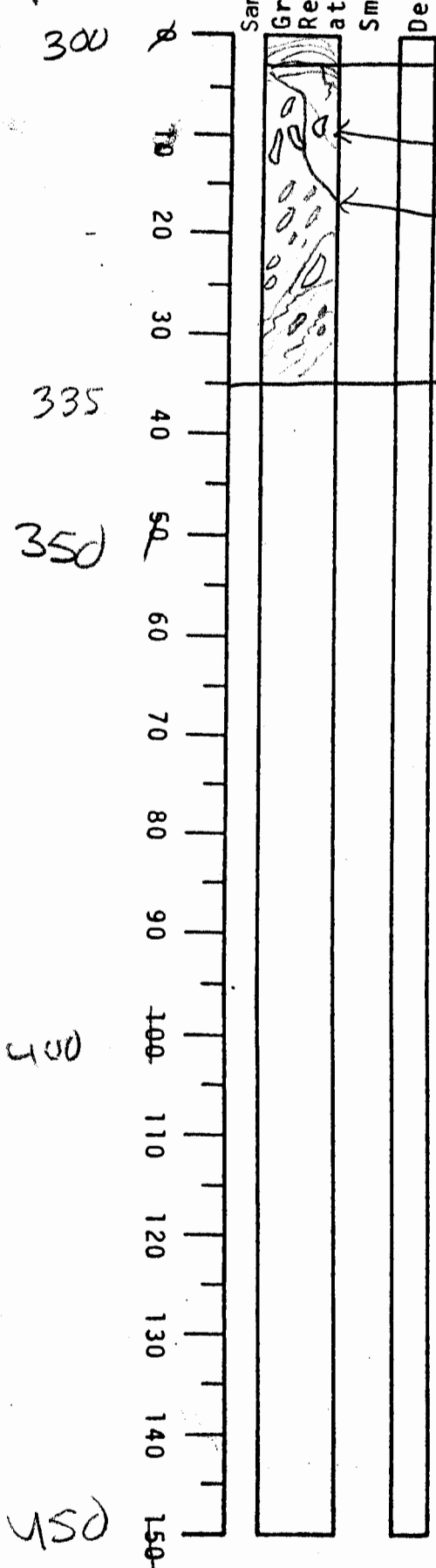
NEBCO

150-165 Slab of olive gray SY 4/1 clay - no structure
 150-180 Light olive gray SY 5/2 clay
 at 155 cm Rock clast - medium gray NY
 Flat  3 cm silt/sand stone with pitted surface
 150-180 no distinct structure
 Foram common.
 180-240 chaotic olive gray SY 4/1 clay with distinct banding oriented similarly. bands range from 1mm-5 cm
 distance color changes from olive gray to reddish and bluish repeats color of tinges in clay laminae
 end of section 3 80 to 90 cm 10R 4/2
 240-272 olive gray SY 4/1 clay structureless
 slightly darker irregular band
 272-335 totally chaotic swirled clays olive gray SY 3/2
 deformed band of differing colors
 one round black clast at 277 cm across
 sharp contact between banded & nonbanded clays deformed clays.

VISUAL CORE DESCRIPTION

3 of 3

LOCATOR				SAMPLE NO.			SEC.					
G	9	7	-	6	P	C	-	1	3	5		
STATION#							OBSERVER					
												GIR



302
 end of section 4;
 deformed silt lenses
 sharp contact
 103-118 no banded layers
 end of section 5

note:
 Slump from 75_{cm} mass transport to chaotic features to end of core