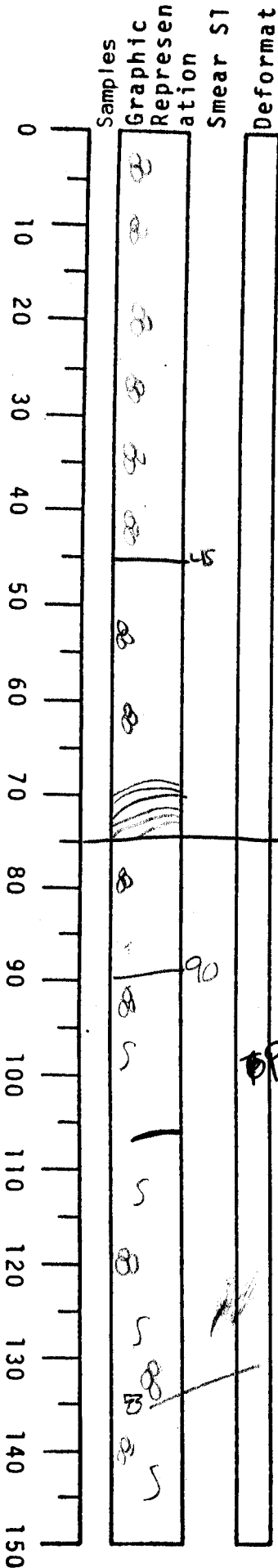


VISUAL CORE DESCRIPTION

1 of 3

LOCATOR				SAMPLE NO.		SEC.
G	9	7	-6	PC	-20	1+2
STATION#					OBSERVER	
					Gita	



0-45 dark yellowish
brown 10Y R 4/2 clay
first 15 cm. very soupy
abundant forams, no structures
37-44 mg. staining - moderate

45-153
Clay - variable color from olive gray
5Y 4/1 to light olive gray 5Y 6/1
forams abundant

70-75 lamination (2-4 mm wide)

end of section 1

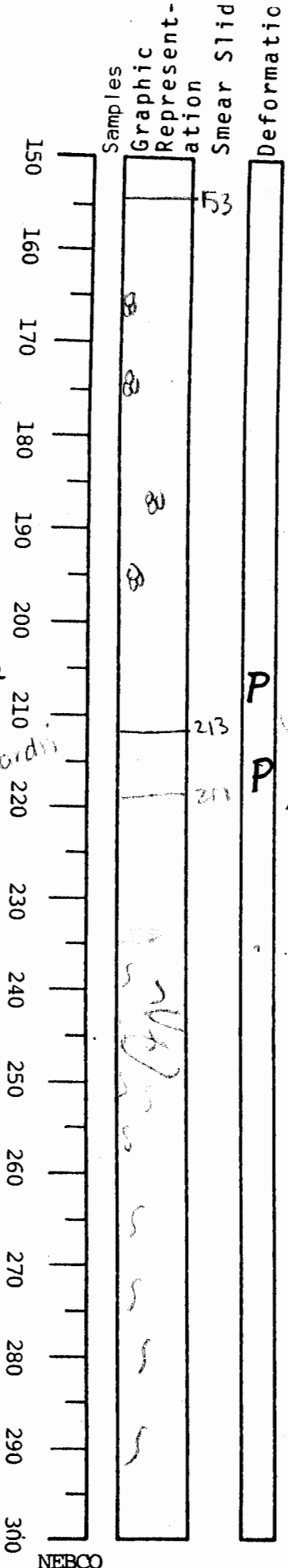
90-152 moderate burrowing - some
filled with darker gray clay.
100-abundant variable color
Menerclii
117 possible iron oxide stain (faint)

132-large white shell (pelecypod?)

VISUAL CORE DESCRIPTION

LOCATOR				SAMPLE NO.		SEC.
597	-	6		PC-20	344	

STATION#	OBSERVER
	Gita



end of section 2

153-213 Light olive

gray clay 5Y 5/2

burrows common - many filled w/ darker gray clay (some small mm scale to cm scale)

darker towards 210

Carbon common

207 - Tubida common - no menardii
+ tuboda rare

Poss #/P

betw/ ~~gray~~ olive gray + gray clay

gradational contact

- abundant Bo's dominant in CF

207 - tubida rare

- no menardii

- rare tubatubanoides

217 - rare Bo in CF lack of tuboda + trancats + menardii

230 - faint dark (mm) sewing

217-411

olive gray 5Y 4/1 clay moderately burrowed - in general

230-260 extensively burrowed. irregularly shaped

distinct burrows of dk olive gray clay

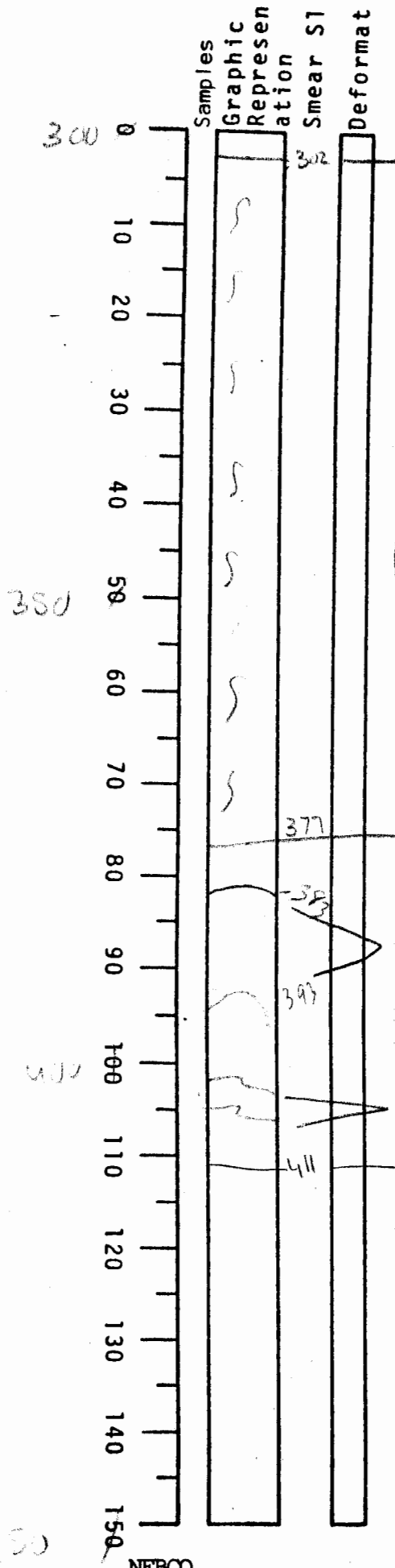
1 cm - 8 cm horizontal size burrows

260 cm - 275

Many fewer distinct burrows

VISUAL CORE DESCRIPTION

LOCATOR				SAMPLE NO.		SEC.
G97-6				PC-20	56	
STATION#				OBSERVER		
				Gita		



end of section 4

All of sect

end of section 5

382 - 393 darker gray clay - olive gray
5 1/2

403-405 - same color as 382-393

end of section 6

Entire core appears to be
a hemipelagic sequence in situ
with no debris flow clasts