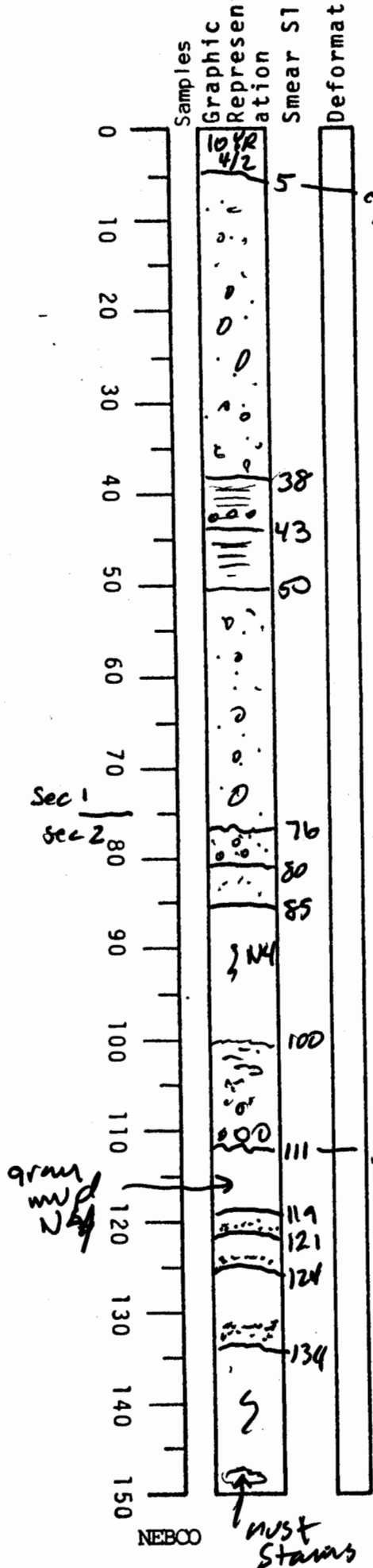


VISUAL CORE DESCRIPTION

LOCATOR		SAMPLE NO.		SEC.
597-6		AL	24182	
STATION#			OBSERVER	
			JED	



0-5 contact
chk yellowish bn Calc clay w/ forams
may be irregularly disturbed, soupy

5-238 is soupy medium dark ^{silty} gray clay (N4) which has zones of very small mud clasts - most 1mm or less but clasts up to 0.4 cm dia occur can not tell if more than one bed in this unit grading of clasts not apparent.

38-43 black hydrotrillite stained silty clay which also has at least some zones of tiny mud clasts (< 1mm) - some are greenish gray 56 G/1 bed (see)

76-80 N4 gray mud with 2mm clasts
80-85 lighter gray mud
43-50 smoother silty gray (N4) mud with irreg hydro stains - appear to be some fine mud clasts present

85-100 smoother mud gray burrowed hydro stains
50-76 soupy gray (N4) silty mud with small mud clasts throughout most < 2mm but rarely up to 1 cm dia. some clasts are greenish gray 56 G/1 bed may show overal normal grading

100-111 graded bed silty mud w/ mud clasts up to 3mm in 109-111 cm sharp base
119-121 } graded beds gray mud -> silt sharp bases
121-124 }
124-134 } (st 130-134)

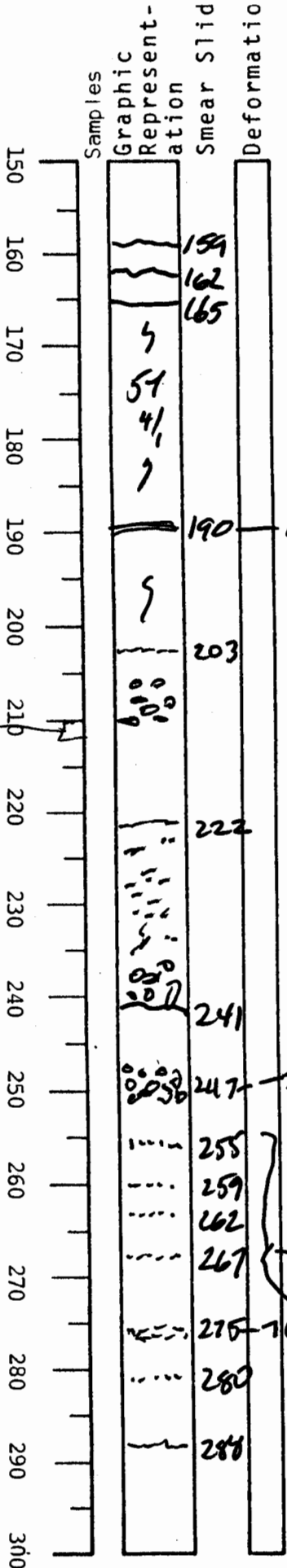
134 to 150 olve gray mud (574/1) burrowed - wst stains near base

VISUAL CORE DESCRIPTION

3-4

LOCATOR				SAMPLE NO.		SEC.
G	9	7	-	P	C	24
						4/5

STATION#	OBSERVER
	JED



150-159 silty gray mud
rusty near base (168-169)

159-162 gray (N4) silty loam
with <1mm clasts

162-165 lighter gray silty mud
with greenish gray (<1mm) clasts

165 - ~~168~~ 203 olive gray clay 54 4/1
burrowed

190 rust stained lambs or burrows

203-222 olive gray silty
clay much like above but
disseminated small mud
clasts especially

204-210 (clasts to 4mm dia)
~~but~~ some clasts are
the greenish gray
56 6/1 color

222-241 silty clay mud and
silt with mud clasts

241-250 laminae <1mm to >3mm dia appears
to be graded
some shell frags present

241-288 silty olive gray
clay - has very
silty zones as
noted

288-base less silty
burrowed olive
gray clay

12/24/98T

VISUAL CORE DESCRIPTION

LOCATOR			SAMPLE NO.		SEC.
G97	-	6	PC	24	586
			STATION#	OBSERVER	
				JED	

300-305 same as 288-300

305-308 - gray clay N5

308-408 base

Medium dark gray

Silty clay

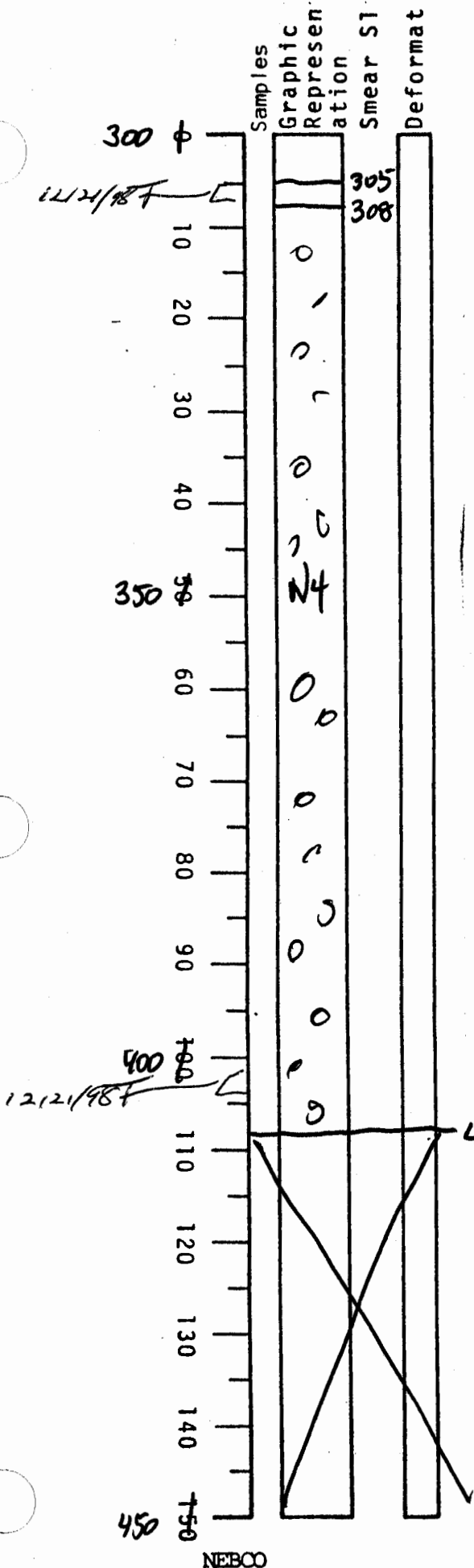
below 10 - scattered

med clasts disseminated throughout

Most clasts are 1mm to 3mm but clasts up to > 1cm are rare to common

No apparent grading and clasts of various sizes are disseminated throughout

Many clasts are greenish gray 5-6%
Some dark gray clasts also occur
all clast well rounded



NEBOO