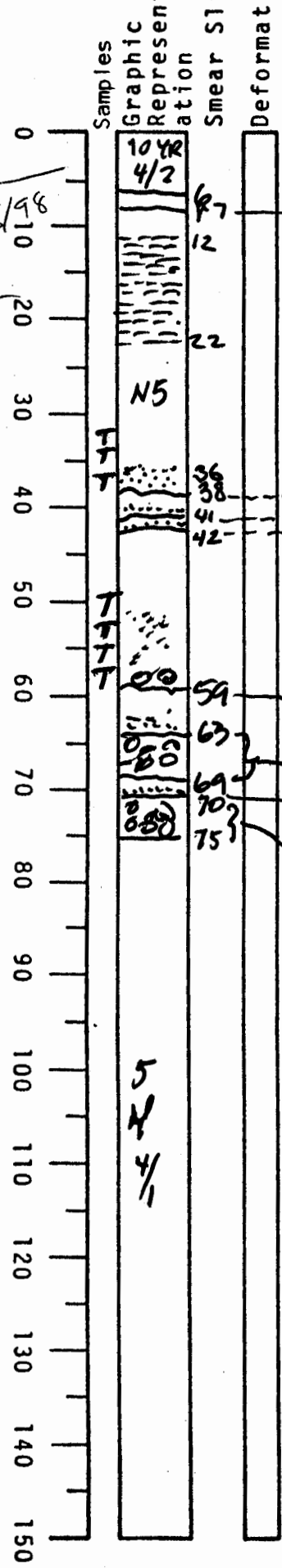


VISUAL CORE DESCRIPTION

LOCATOR				SAMPLE NO.		SEC.
GR	97	-	6	PC	25	12
STATION#				OBSERVER		
				JED		

3-5 cm
AMS 8/18/98
just above
rust layers



0-6 dk yellowish bn clay
rust lam at 7 laminated
maybe silty

7-38 graded bed?
7 to ~35 is silty ^{medium} gray
clay (N5)
numerous silt laminae (<1mm)
between 12 & 22
faintly laminated 22-35
grades down to silt
by 35, becomes ^{friable} ~~indurated~~
36-38 - sharp base

38-41 graded bed - gray clay
to ~~indurated~~ silt
friable

41-42 graded bed gray clay
to silt sharp bed

42-59 graded bed
gray silty clay grading
to silt by 48 then
to fine sd at 53 to 59
fine sd contains ^{small} mud clasts within ^{a few} bed/lower sd

59-63 graded bed gray

63-69 mud clasts
brnsh to light gray
up to 0.5cm dia

69-70 graded bed clay → silt

70-75 clay with mud clasts
up to 0.5-1cm long

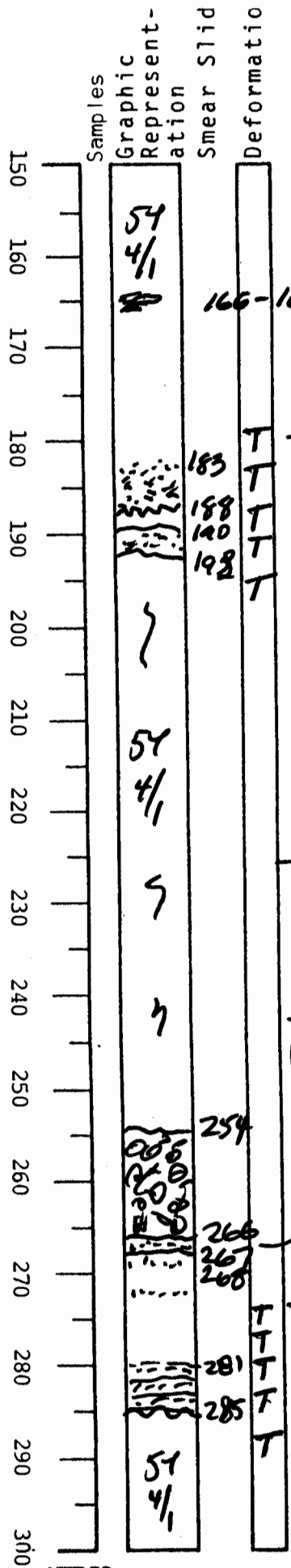
75-150 olive gray silty
clay
rusty stain laminae
86-87 92-93
slight burrowing

or 2 dif. units
Graded bed

clasts
61-70 GB
clasts

VISUAL CORE DESCRIPTION

LOCATOR				SAMPLE NO.		SEC.
C	1	7	-	P	C	2534
STATION#					OBSERVER	
					JED	



166-167 silt filled burrows

150 - ~183 olive gray clay slightly burrowed grades into ~~silt~~ silt about 183 -

chaotic silt? or clay unit between

~183-188 graded silt to fine sd v. irregular base - top of bed not apparent

188-190 gray clay - or possible clast in
190-193 sand fine - appears ^{one} layer burrowed

see Tex samp from 193

193-254 olive gray clay 5Y 4/1 slight burrows
End Section 3

Two imp. features - note many of the mud clast debris flow units have separate 1-2 cm sand layers within them eg 65-75 cm also many of chaotic silt units have very irreg. bases.

254-266 zone of grayish clay with exotic mud clasts dark to light gray also moderate by 5YR 3/4 (brick red) clasts clasts 2mm - 3mm

266-267 gray fine sd

268 f.sd lamina

272 f.sd lamina

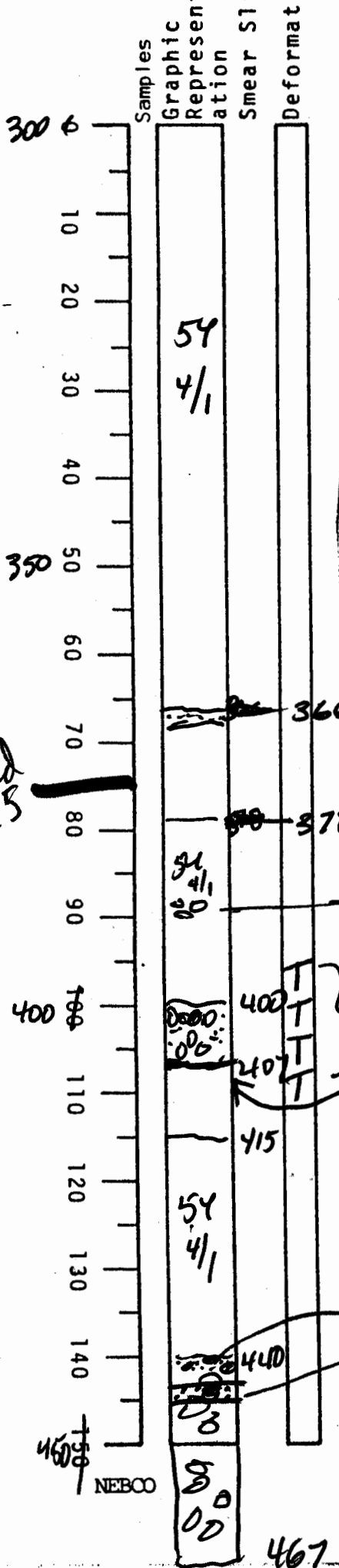
281-285 "chaotic silt" sd laminae with mud lams (4mm) in between may be some burrowing also some lower lams truncated - Base very irregular & ripped up

267-300 olive gray clay

NEBCO

VISUAL CORE DESCRIPTION

LOCATOR				SAMPLE NO.		SEC.
697	-	6		PC	25	526
STATION#					OBSERVER	
					JED	



300-366
olive gray clay
slightly burrowed

366-367 sd bed
367-378 olive gray clay with brownish cast
between 5Y 4/1, & 5YR 4/1

378-400 olive gray clay

sd filled burrows
chaotic silt bed base ^{not} very "ripped up" - gen smooth contact

400-407 fine sd with
RC 407-409 cm mud clasts 1-3 mm most near top, but also @ base

407-415 - like 367-378
↳ appears to be hemipelagic - ~~deepest~~ in core

415-440 olive gray clay ~~is~~ also possible chaotic silt cap. w/ chaotic note within clay clast unit a 1.5 cm chaotic silt bed

440-467 olive mud w/ abdt mud clasts

dk grays & browns up to 5 cm long

END OF CORE

end Section 5

see note @ 335 cm