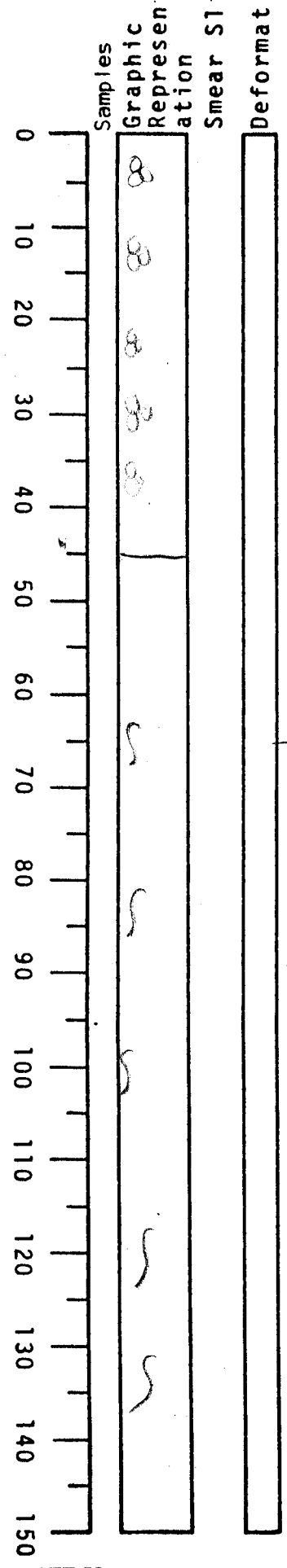


VISUAL CORE DESCRIPTION

LOCATOR				SAMPLE NO.		SEC.
G	9	7	-	6	PC-30	142
STATION#					OBSERVER	
					Gita	



0-45 dark yellowish  
brown clay 10YR 4/2  
Soapy - structureless  
F. from rich

gradational contact

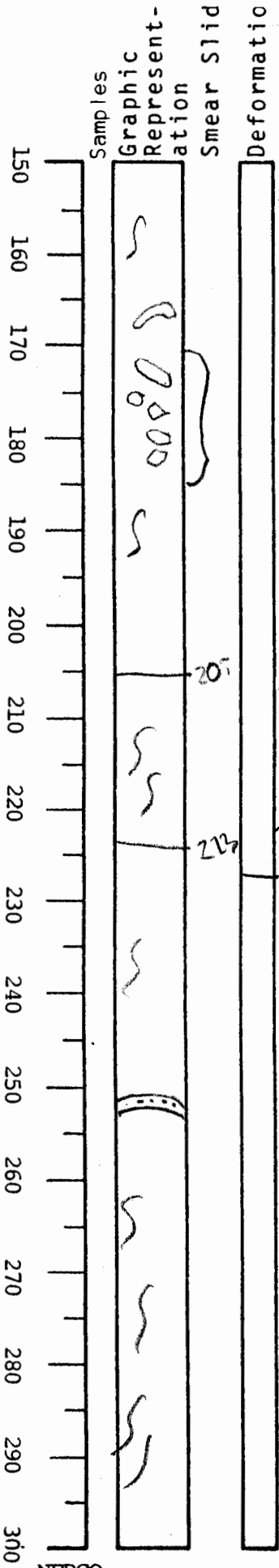
45-205 LIGHT olive gray 5Y 5/2 clay

end of section 1

moderately burrowed - filled w/ darker  
gray clay - randomly openings - some  
distinct outlines - other more vague  
upto 4 cm long.

VISUAL CORE DESCRIPTION

LOCATOR				SAMPLE NO.		SEC.
E97	-G			PC-30	314	
STATION#					OBSERVER	
					Gita	



-152 end of section 2

concentrated burrows  
 distinct burrows w/ green stain in between. (moderate olive brown 5Y 4/4)

gradational contact  
 subtle color change to brownish gray clay  
 moderately burrowed 5Y 4/1

gradational contact  
 221 end of section 3

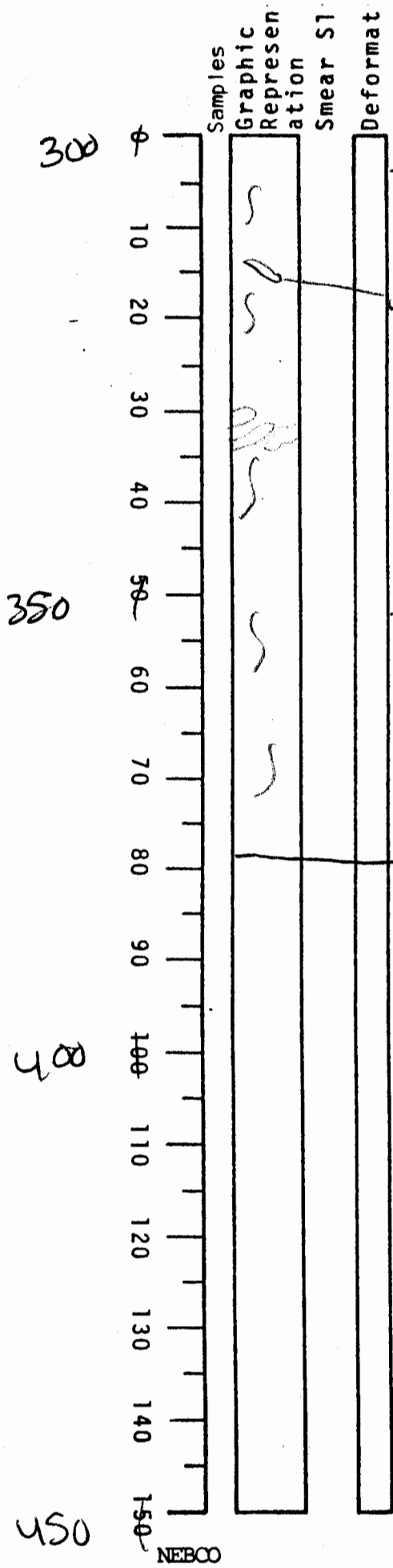
223-318 olive gray 5Y 4/1 clay  
 moderately burrowed filled w/ darker gray clay.

1/2 - 3 cm burrows

253 - 1/2 cm wide silt bed

# VISUAL CORE DESCRIPTION

LOCATOR				SAMPLE NO.		SEC.	
G97-6				PC-3056			
STATION#				OBSERVER			
				Gita			



303 end of section 4

Burrow

intense burrowing

no noticeable burrowing

smooth clay

378 end of section 5 & core