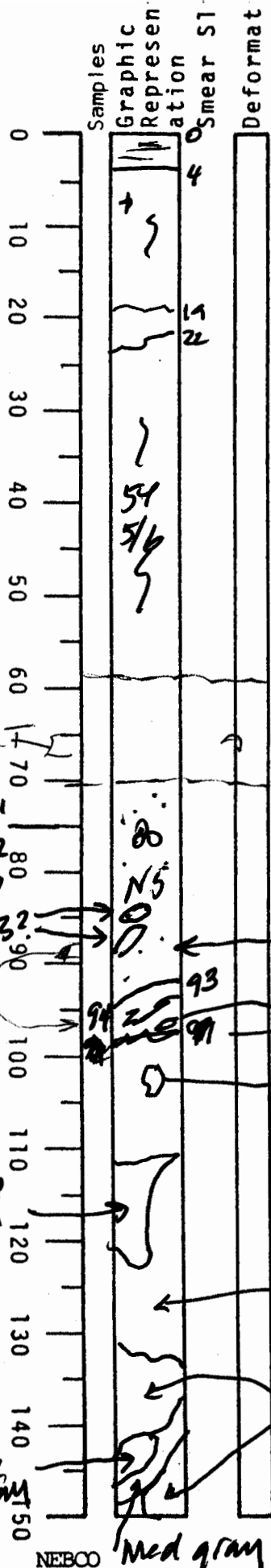


VISUAL CORE DESCRIPTION

LOCATOR		SAMPLE NO.		SEC.
G97-6		PC	31	1#2
STATION#			OBSERVER	
			JED	



0-4 dk yellowish bn clay - Calc forams laminated by black MnOx stains

4-19 ~~be~~ Color between dk yellowish bn & olive gray (544/1)

14-22 dk yellowish bn clay w/ MnOx stains

22 ~ 53 light olive gray clay moderate burrowed - forams abdt

INTERVAL from 0-55 is well to moderately burrowed forams abdt to common

53-70 disturbed - fell out of tube - put back in place → Med gray N5 clay origin uncertain but lack of forams & coarse mat'l ⇒ Clay turbidite?

70-97 is med gray sandy silty clay and forams V. abdt. There may be mud clasts as shown (could be burrows) This bed may be a clast or reworked mat'l

93-150 deformed gray mud of various shades deformation, flowage and mud clasts apparent

MTD continues to base of core

65-67 cm 14/15/98

Sec 1 75

Sec 2 80

83-84.5 AMS comp 8/17/98

67-69 12/16/98

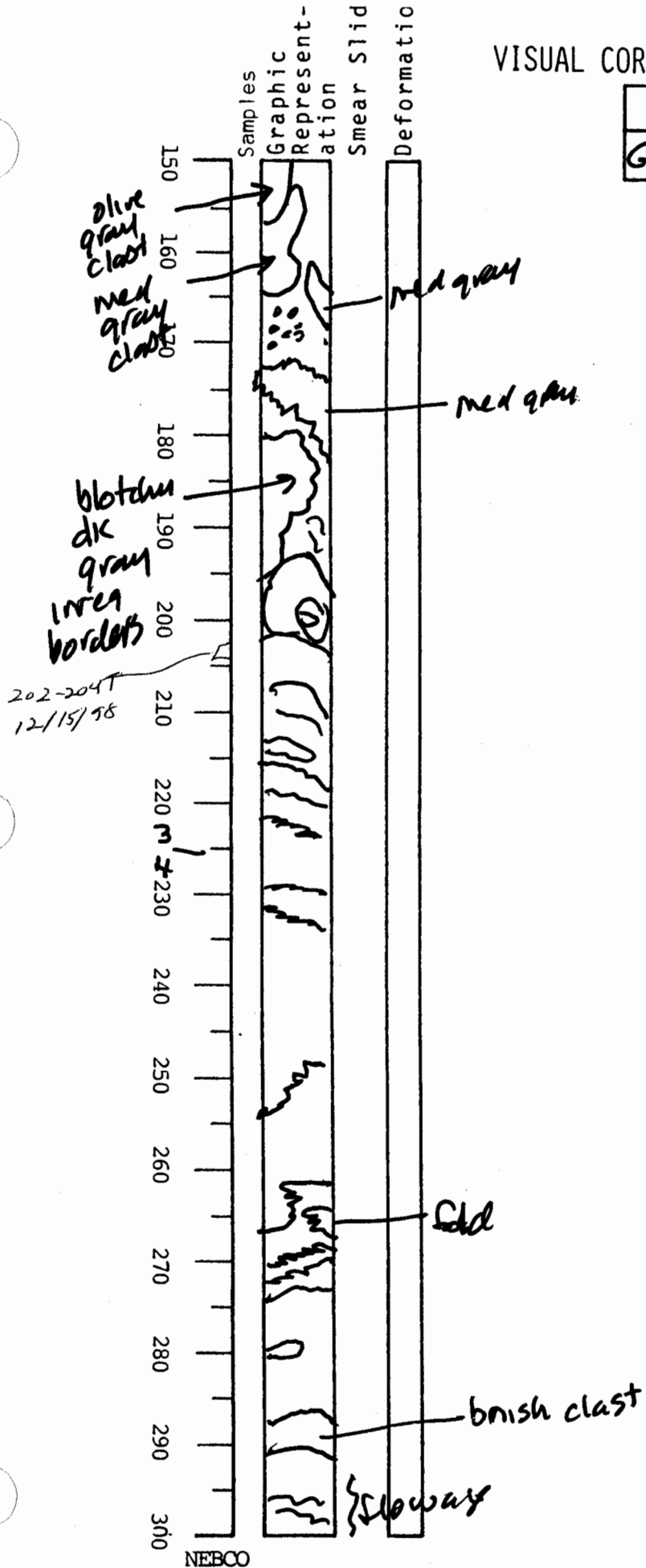
olive gray clast

dk gray

NEBCO

VISUAL CORE DESCRIPTION

LOCATOR				SAMPLE NO.		SEC.
G	9	7	-	6	PC	31
					STATION#	OBSERVER
						JAD



150-300 is deformed
gray clay of
various shades

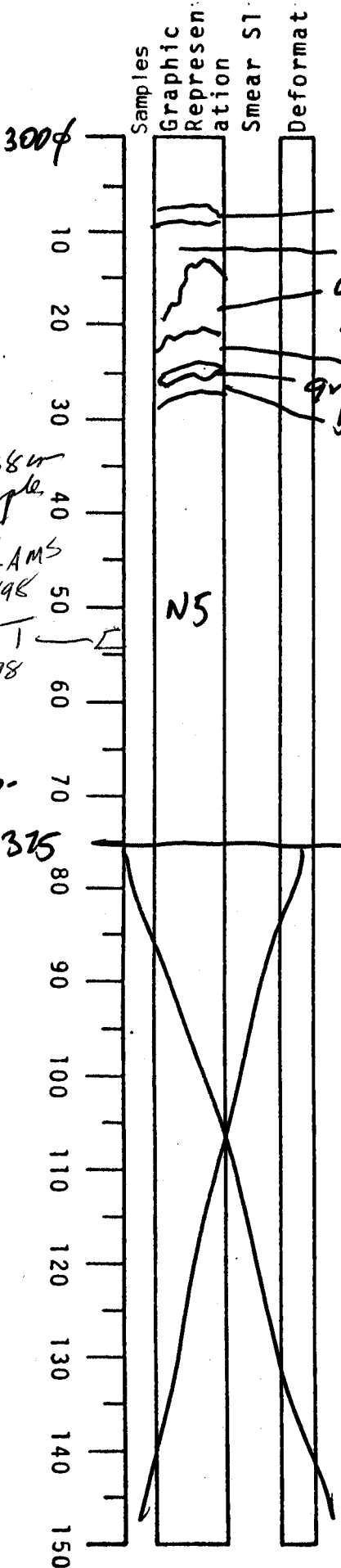
MTD

major structures
shown

Med - ~~dk~~ N4-N5
med dk gray

VISUAL CORE DESCRIPTION

LOCATOR				SAMPLE NO.		SEC.
G97-6				PC	315	
STATION#					OBSERVER	
					JZ	



300-375
deformed gray
clay like above

below about 30
Smooth gray clay N5
homogeneous - except
occasional small shell?
frags - no good
evidence of deformation.

335-338
AMS Sample
8/17/98
338-345-AMS
12/15/98
352-354
12/15/98

N5

375 base of
core

3'

375