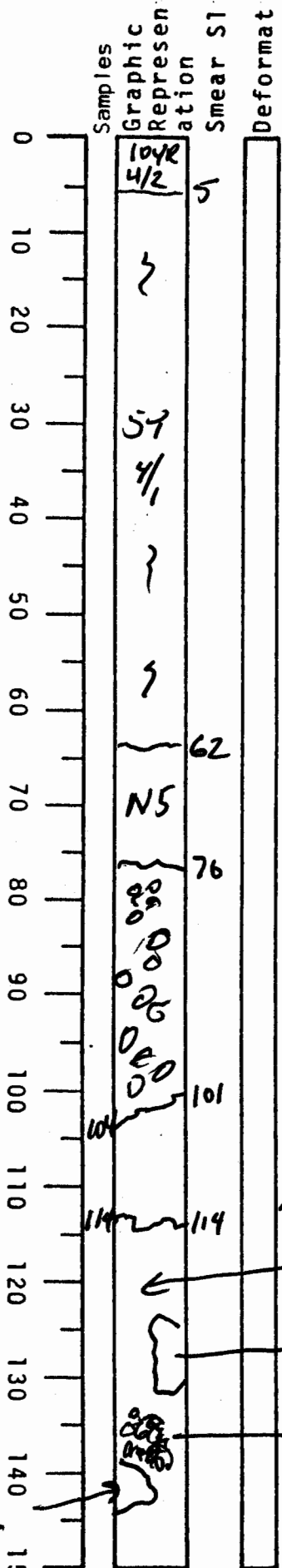


VISUAL CORE DESCRIPTION

LOCATOR				SAMPLE NO.		SEC.
G97	-	6		PC	32	122
STATION#					OBSERVER	
					JED	



0-5 dark yellowish brown calc foram clay some black MnO₂ bands

5-~62 olive gray calc-rich clay forams common slight burrows

62 to base of core 340cm is deformed gray clay MTD slump/d.f.

62-76 smooth gray clay (clast?)

76-101 smooth gray mud w/ stiffer mud clasts - gray to green gray 1mm - 1cm dia

101-114 Exotic greenish gray clast (SG 4/1) forams common

114 - 150 gray mud w/ clasts scattered

Greenish gray clast like 101-114

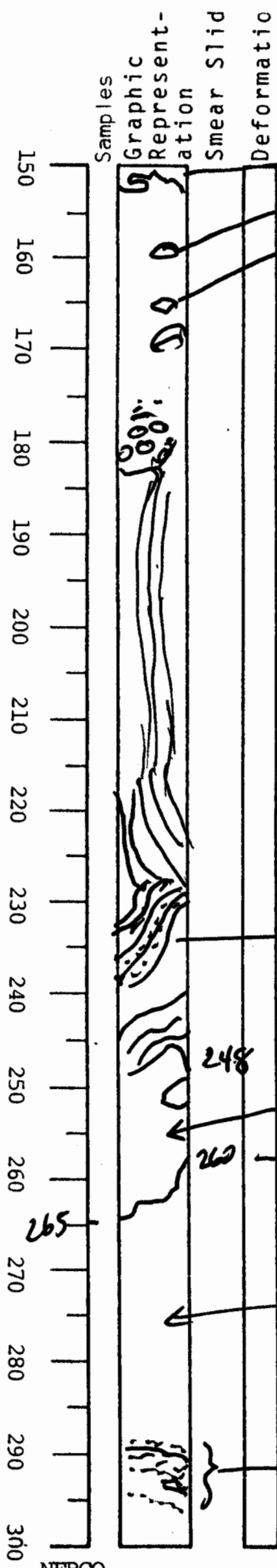
Smaller clasts in soapy matrix

Large darker gray clast

VISUAL CORE DESCRIPTION

34

LOCATOR				SAMPLE NO.		SEC
297	-	6		PC	32	34
STATION#					OBSERVER	
					JED	



greenish gray

Deformed, flowed gray clay & clasts

vertical structures flowage, fold?

deformed dipping silt laminae and clasts

248 } different shade of gray = large clast?
260 }

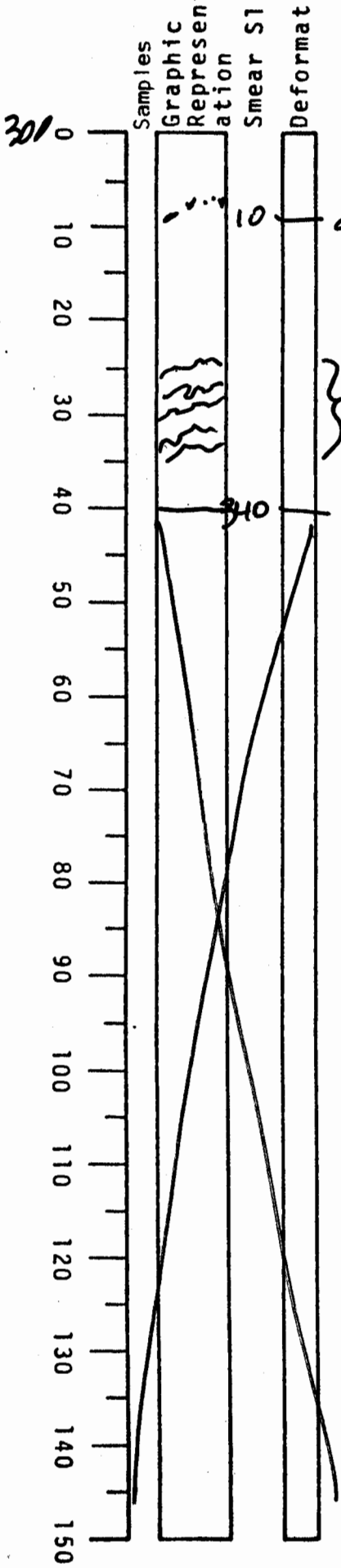
265

undeformed gray clay

dipping deformed silt laminae

VISUAL CORE DESCRIPTION

LOCATOR				SAMPLE NO.		SEC.
G	9	7	-	6	PC	32 5
STATION#					OBSERVER	
					JED	



10 discontinuous
dipping ~~at~~ silt lam

flowed layers
of lighter gray
and greenish
gray. } gray clay
with some
deformed
layers

340 340 base of core