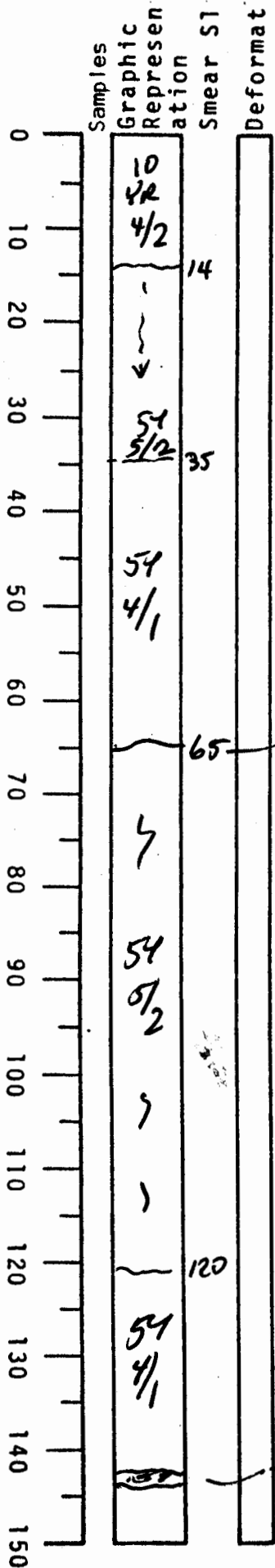


VISUAL CORE DESCRIPTION

LOCATOR				SAMPLE NO.		SEC.
G97	-	6		PC	38	1#2
STATION#					OBSERVER	
					JED	



0-14 dk yellowish
bn calc foram
clay 10YR 4/2

14-~35 becomes lighter ~~dk dk~~
yellowish bn and grades
~~down~~ downward into
light olive gray 5Y 5/2
by 35
well burrowed

35-65 olive gray foram 5Y 4/1
rich clay
moderate burrows

65 - sharp wavy
contact

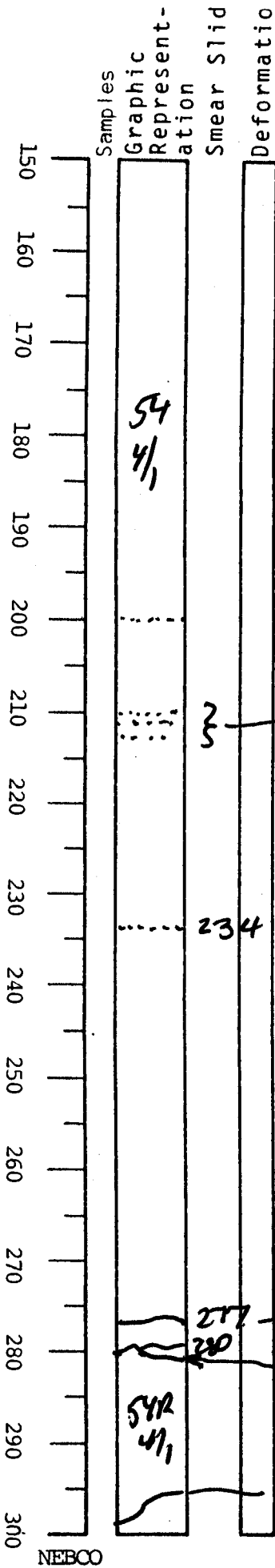
65-~120 light olive
gray clay 5Y 5/2
moderate burrows
forams abdt.

120-150 olive gray 5Y 4/1
smooth ~~gray~~
clay - finely laminated
lighter & darker

143-144 burrow of
lighter gray clay
abdt forams

VISUAL CORE DESCRIPTION

LOCATOR				SAMPLE NO.		SEC.
G	97	-	6	PL	38	544
STATION#					OBSERVER	
					FD	



150 - 277
 smooth gray ^{highly} laminated clay
 olive gray 544/1
 rare burrows
 rare st lambs as noted

} possibly v. thin st lambs (<1mm thick)

234 - 1mm st lambs

277-280 brownish gray 54R 4/1 clay with abdt forams

280-299 brownish gray 54 4/1

277 - sharp lithologic contact
 280 - lighter bn clast? or burrow?

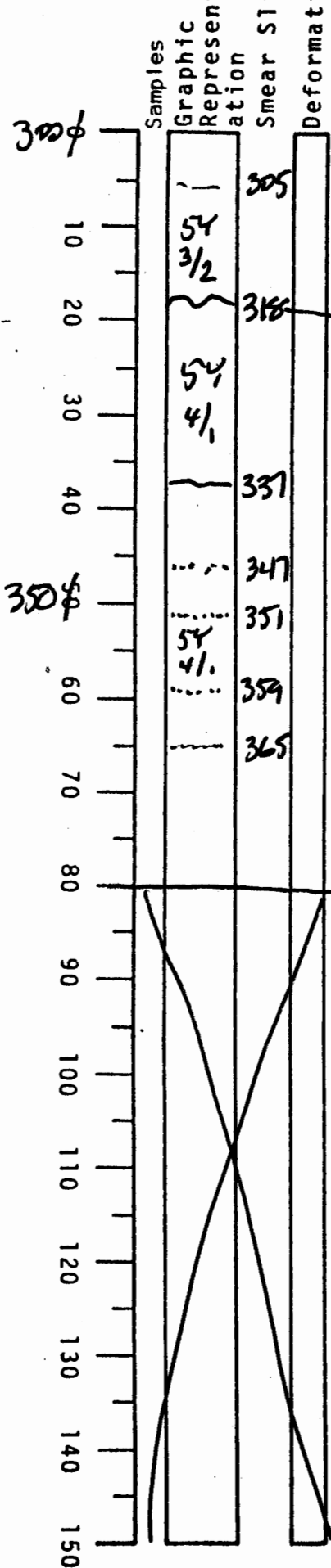
296 - 300 slightly darker brnsh gray

246 angular contact

[NOTE: 277-300 may be exotic displaced sed.]

VISUAL CORE DESCRIPTION

LOCATOR				SAMPLE NO.		SEC.
G	9	7-6		PC	38	5
STATION#					OBSERVER	
					JED	



300-305 dk bluish gray as above

irreg contact

305-318 olive gray 54 3/2 clay - well burrowed

318-337 olive gray 54 4/1 well burrowed clay

337-380

well laminated smooth gray clay olive 54 4/1 like 150-277 a few st lams (<1mm thick) as noted

380 base of core