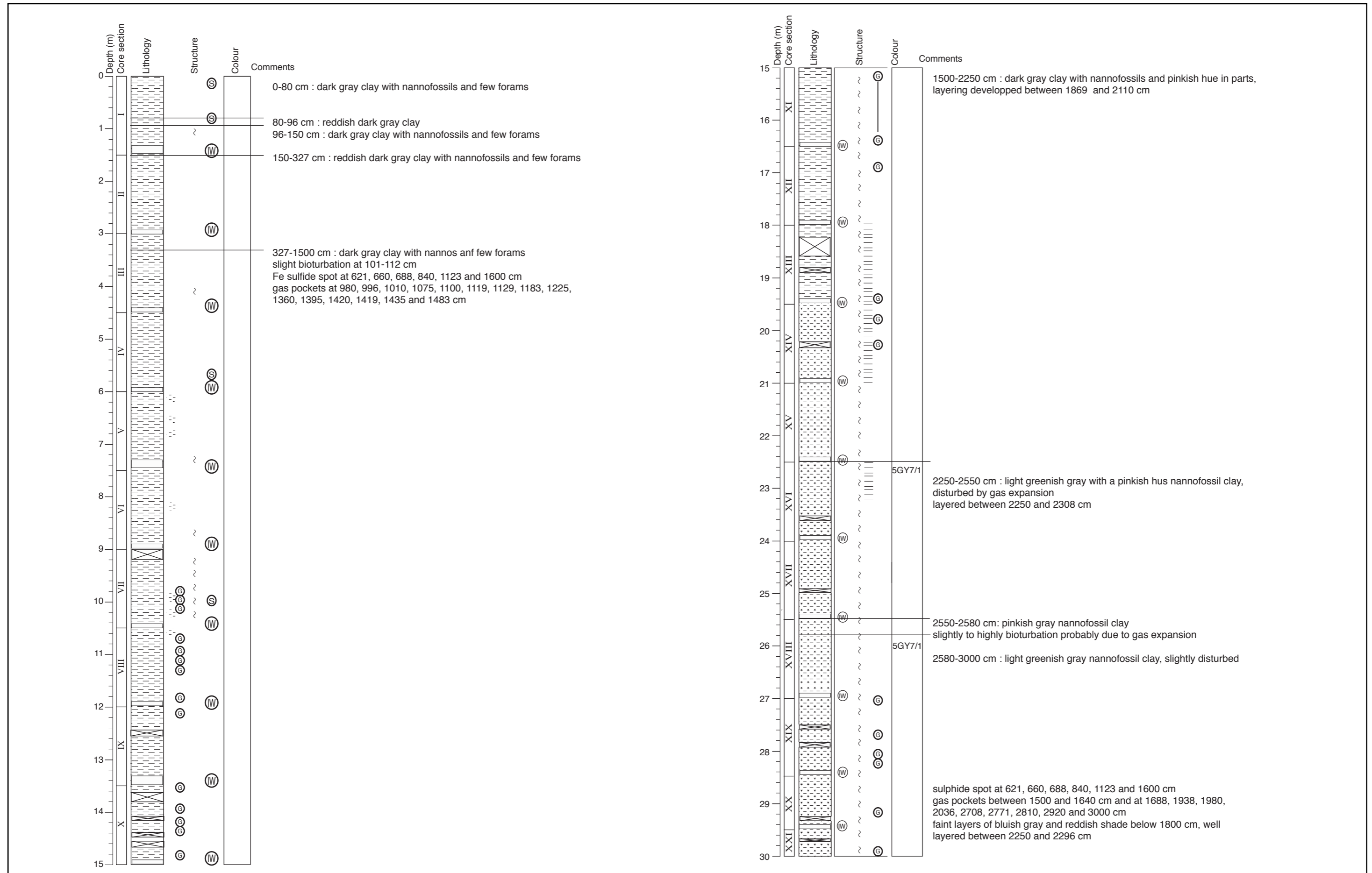
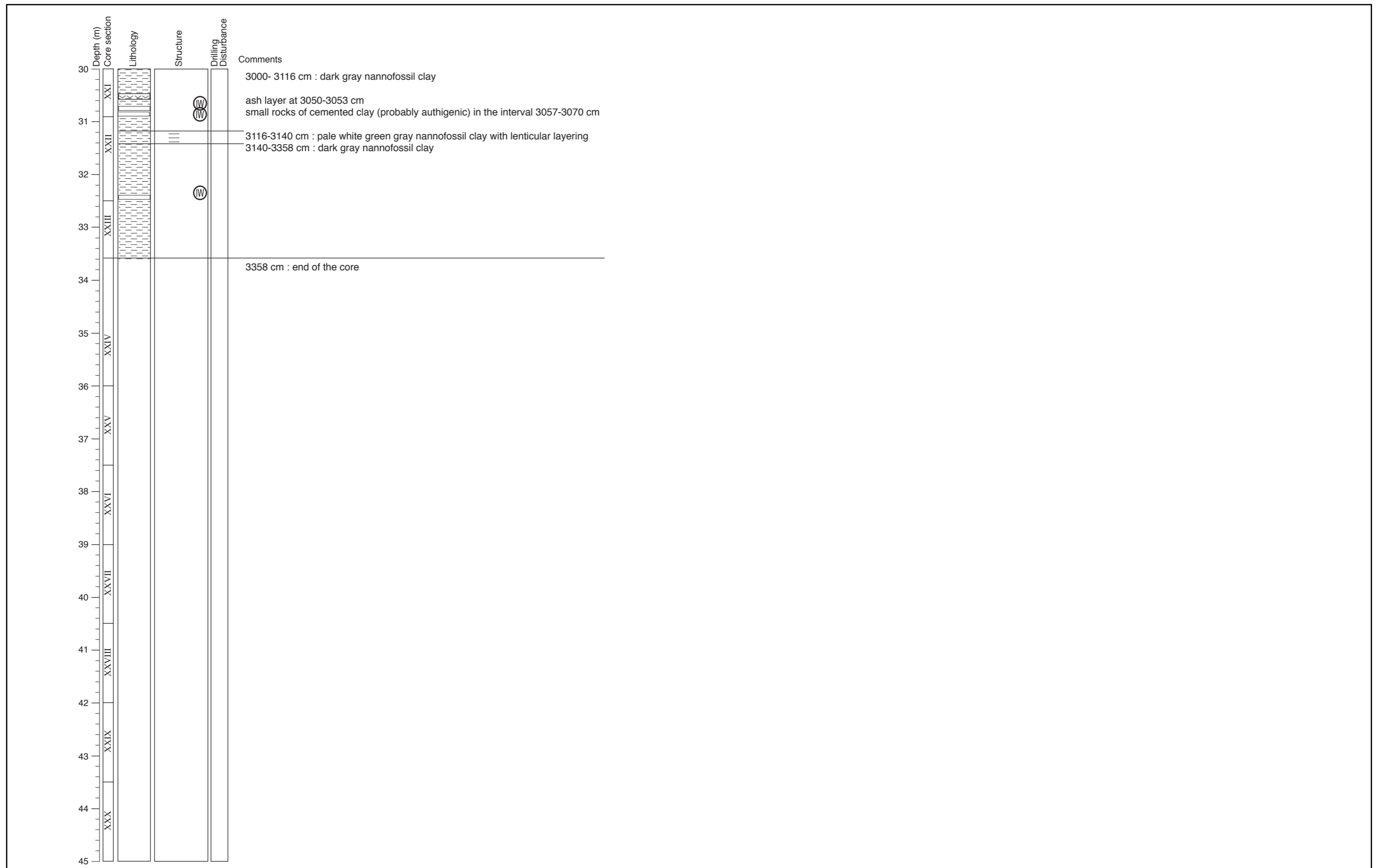
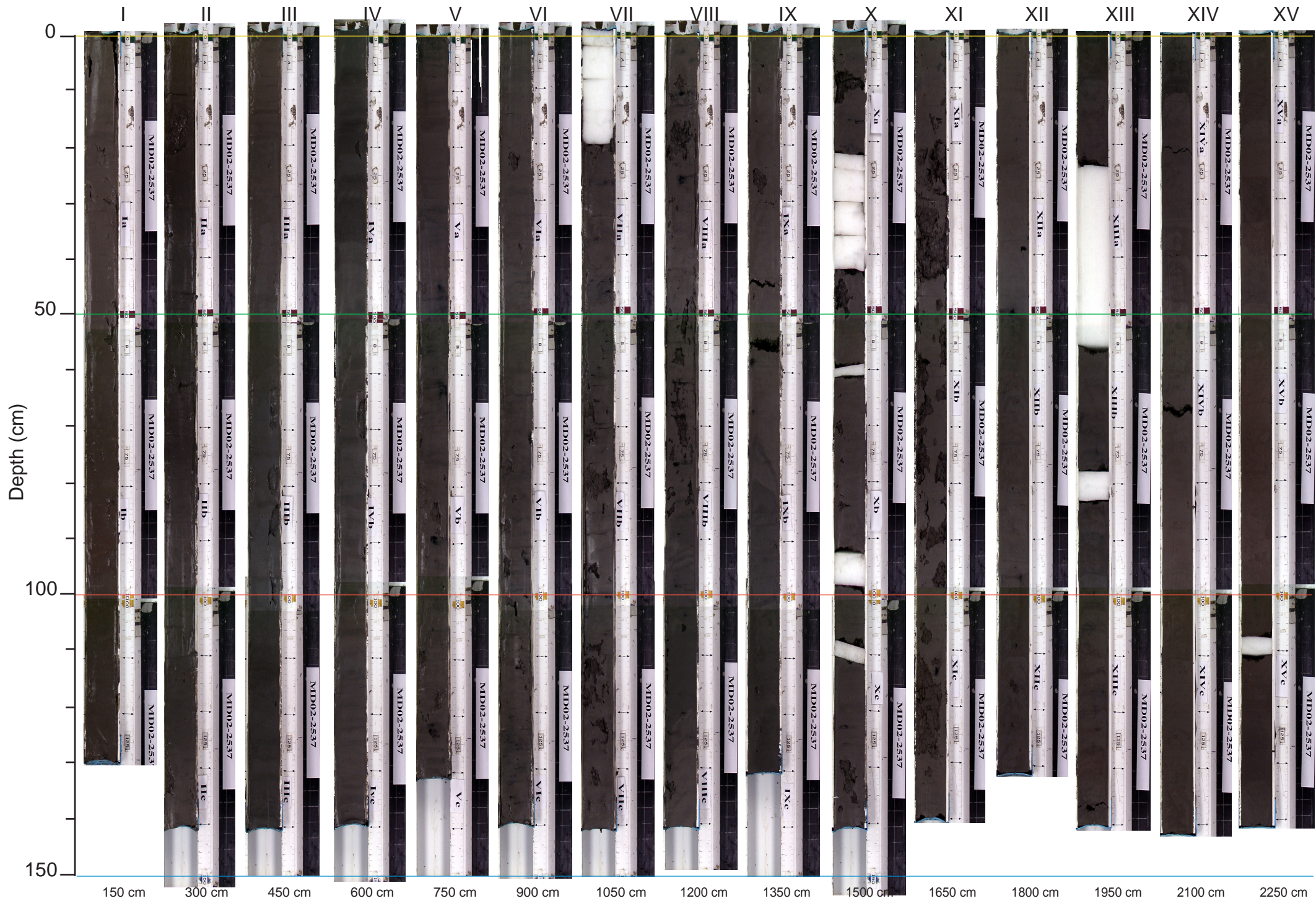


Core description

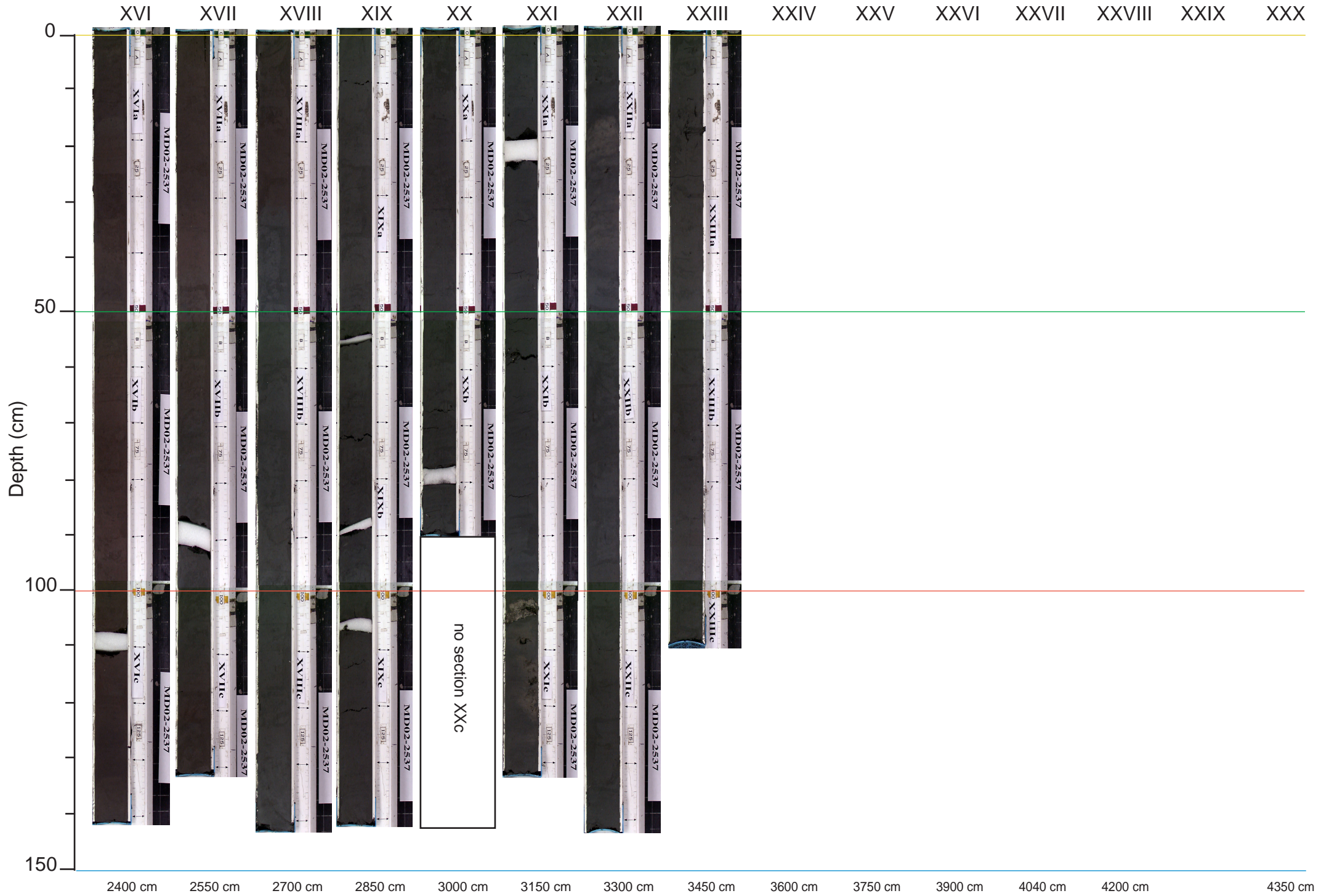




MD02-2537 (sections I to XV)



MD02-2537 (sections XVI to XXIII)



Day: 05/07/02
Latitude: 27°36.96 N
Water depth: 600 m

GMT time: 6 :03
Longitude:92°14.92 W
Location: Tunica Mounds

Core number : **MD02- 2537**

Corer type: Calypso core
Corer length: 40.30 m
Core length: 33.58 m

Observations

Corer condition :

Corer bent at around 12 m

Core condition :

good conditions.

Sections and Sampling

Number of sections recovered and conditions :

23 sections recovered, the last section measures 108 cm

A section of 10 cm was taken at the base of every 1.5 m section

Onboard sampling and post cruise processing :

- the 10 cm sections were taken for pore water analysis (microbiology and SO₄⁻, Cl⁻, CH₄, ¹⁴C, DIC) (MBARI, Univ.Tokyo)
- several bags were recovered : 1 core catcher, 1 core top
- Both the working and archive halves will be stored at Texas A&M University
- X-ray microtomography will be processed post cruise at 310, 530, 1213 cm down core
- MST magnetic susceptibility, gamma ray attenuation and p-wave measurements were made downcore, at a resolution of 2cm. Colour measurements were taken every 2 cm.
- USGS core measurements and activities : Elec. resist., vane shear, water content, whole rounds for consol/triaxial (USGS-WH), free gas samples, headspace gas (USGS-Menlo Park) , thermal conductivity (Univ .Victoria), structure (ODM, PNNL)

Summary of physical and sedimentological observations

Dominant lithologies: dark gray nannofossil clay with rare foraminifera; sediments between 18.7-23m are partially layered; sections below 9m are disturbed by gas holes and voids.

Minor lithologies: ash layer at 3350-3353cm.