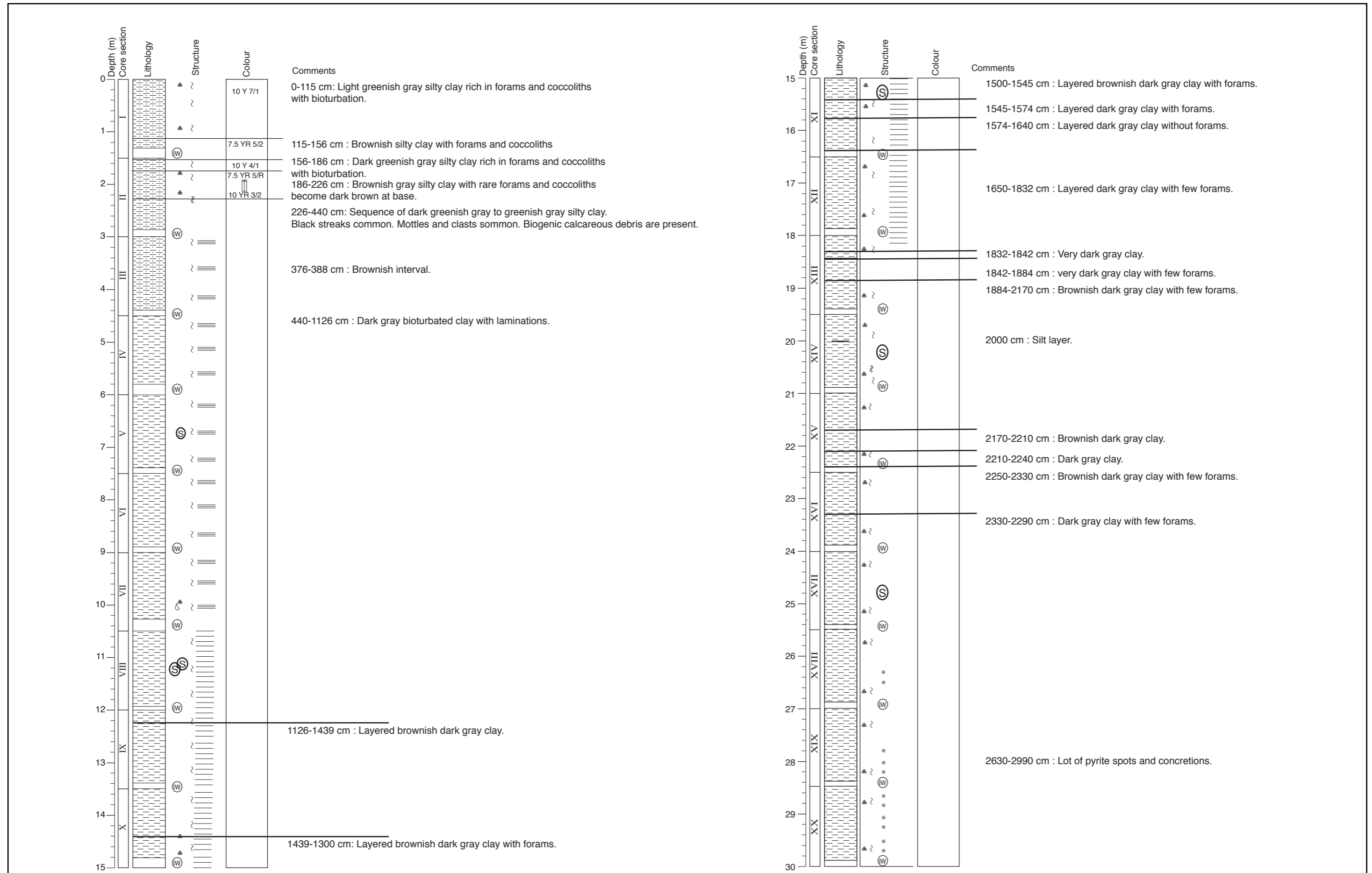
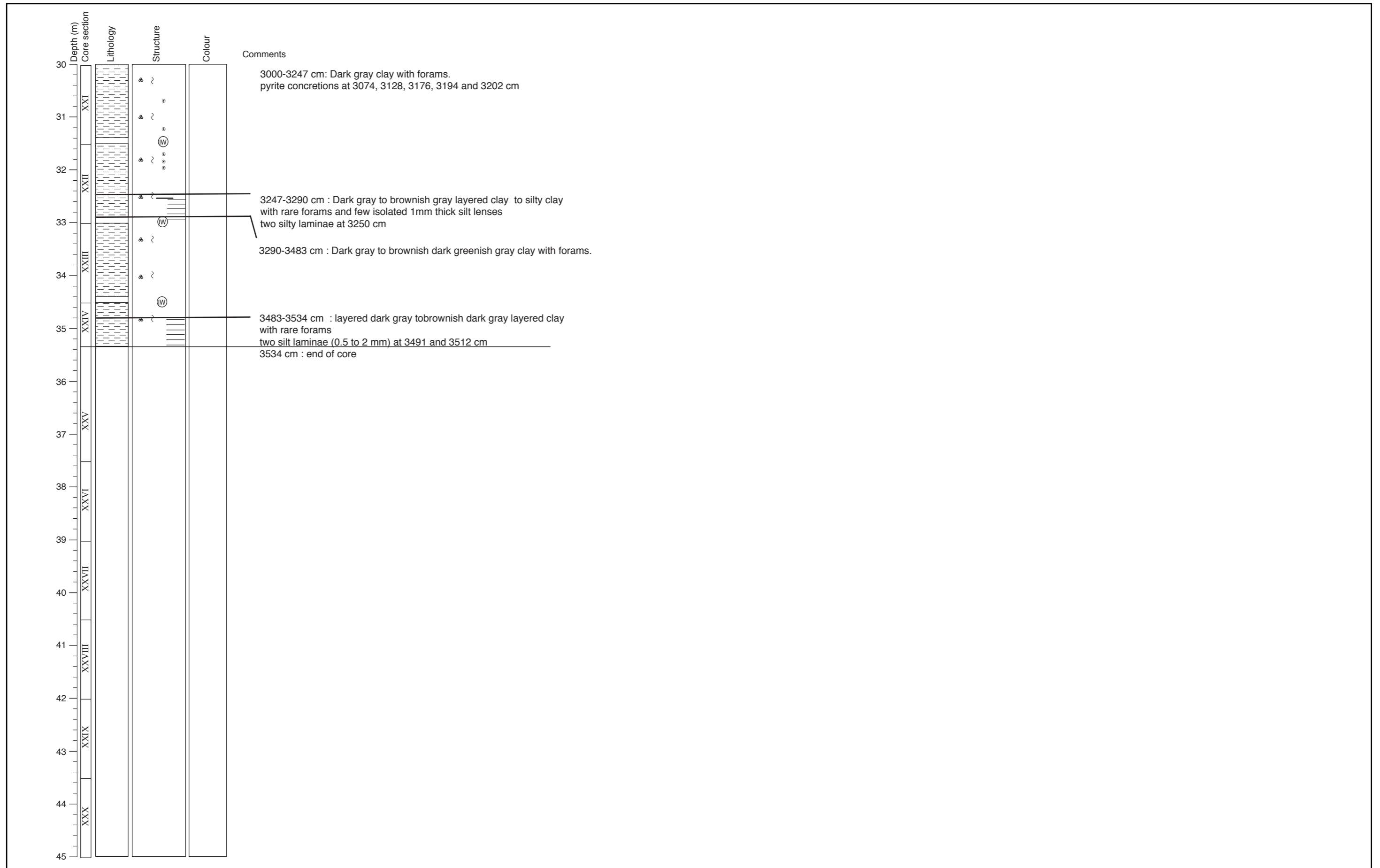


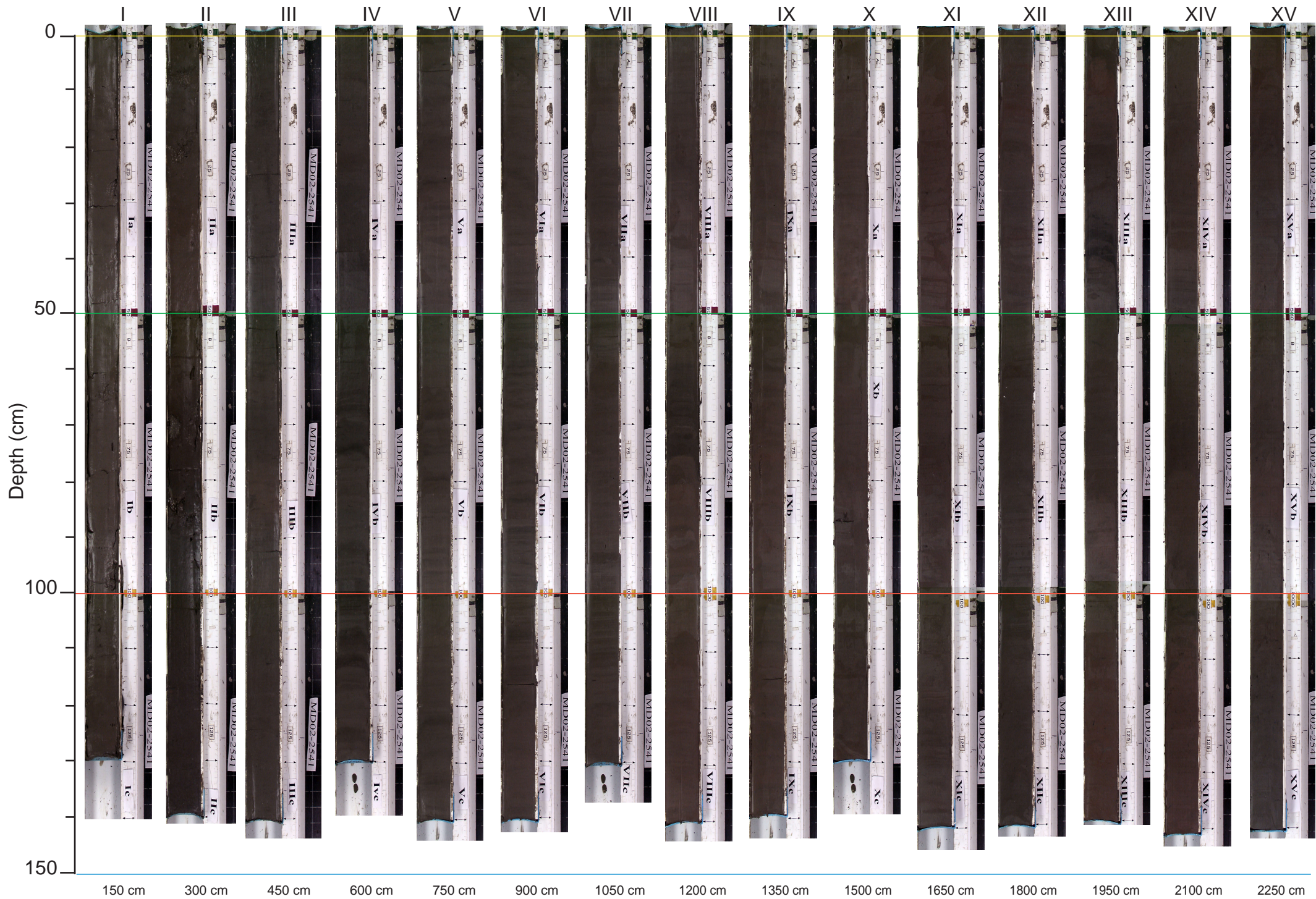
**Core description**





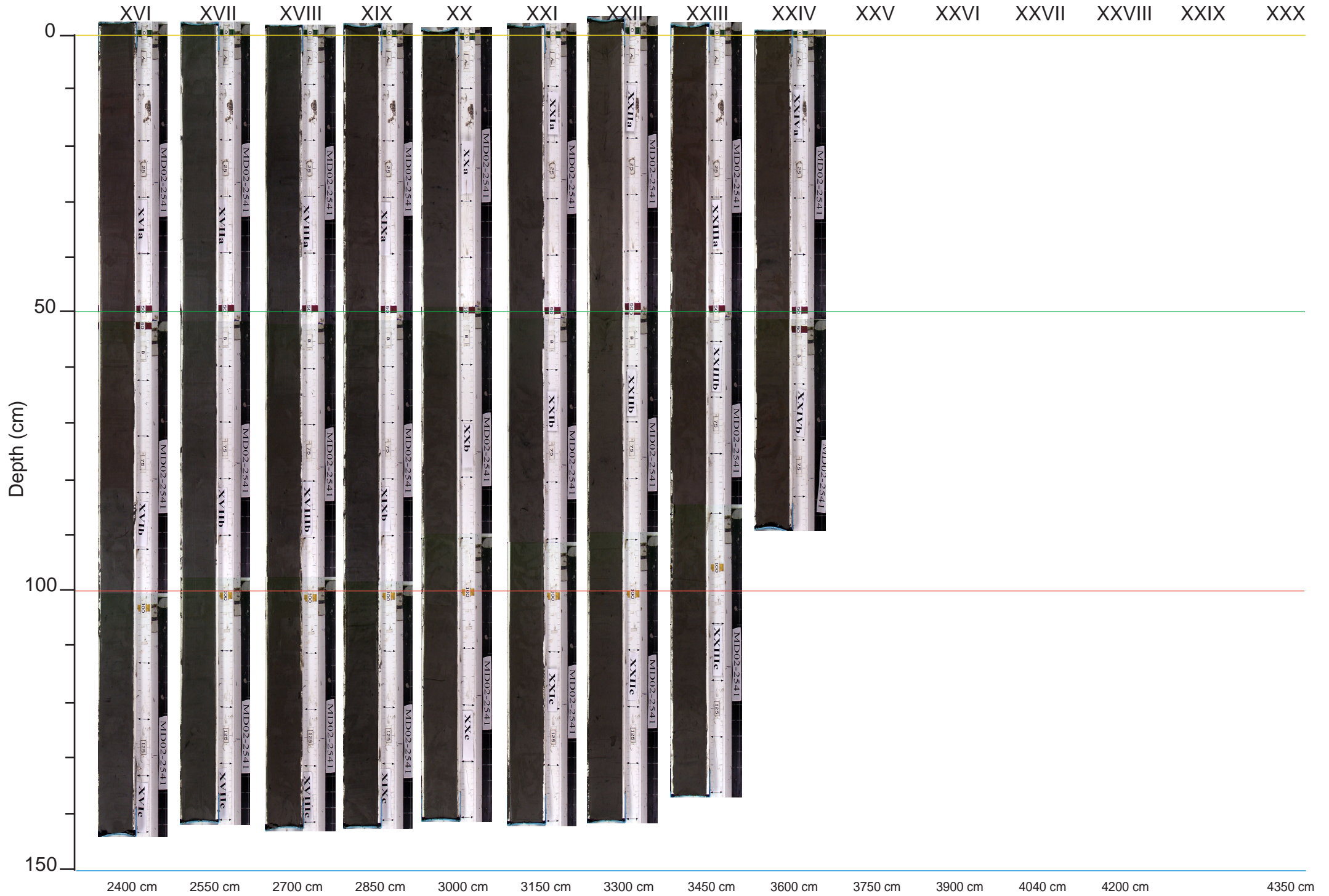


# MD02-2541 (sections I to XV)





# MD02-2541 (sections XVI to XXIV)



Day: 06/07/02  
Latitude: 27°37'95 N  
Water depth: 615 m

GMT time: 21 :37.95 N  
Longitude: 92°12.74 W  
Location: Tunica Mounds

Core number: **MD02- 2541**

Corer type: Calypso core  
Corer length: 45.30 m  
Core length: 35.34 m

### **Observations**

*Corer condition :*

Corer bent at 10m

*Core condition :*

### **Sections and Sampling**

*Number of sections recovered and conditions :*

24 sections recovered, the last section measures 84 cm, good conditions.

A section of 10 cm was taken at the bottom of every 1.5 m section, 2 10 cm section were taken on section I, VII, and X.

*Onboard sampling and post cruise processing :*

- Both the working and archive halves will be stored at Texas A&M University
- the 10 cm sections were taken for pore water analysis, ( microbiology, and  $\text{SO}_4^-$ ,  $\text{Cl}^-$ ,  $\text{CH}_4$ ,  $^{14}\text{C}$ , DIC) (MBARI, Univ.Tokyo)
- several bags were recovered : 1 core catcher, 1 core top
- MST magnetic susceptibility, gamma ray attenuation and p-wave measurements were made downcore, at a resolution of 2cm. Colour measurements were taken every 2 cm.
- USGS core measurements and activities : Elec. Resist ; Vane Shear , water content, (USGS-WH), Headspace Gas (USGS-Menlo Park), Thermal conductivity ( Univ.Victoria)

### **Summary of physical and sedimentological observations**

*Dominant lithologies:* interval 0-4.5m consists of greenish gray to dark greenish gray silty clay with abundant foraminifera (upper 2.2m) to greenish gray to dark greenish gray silty clay; interval 4.5-35.34m consists of dark gray clay with foraminifera, in most parts with faint layering; bioturbated.

*Minor lithologies:* black organic-rich streaks common, several pyrite concretions