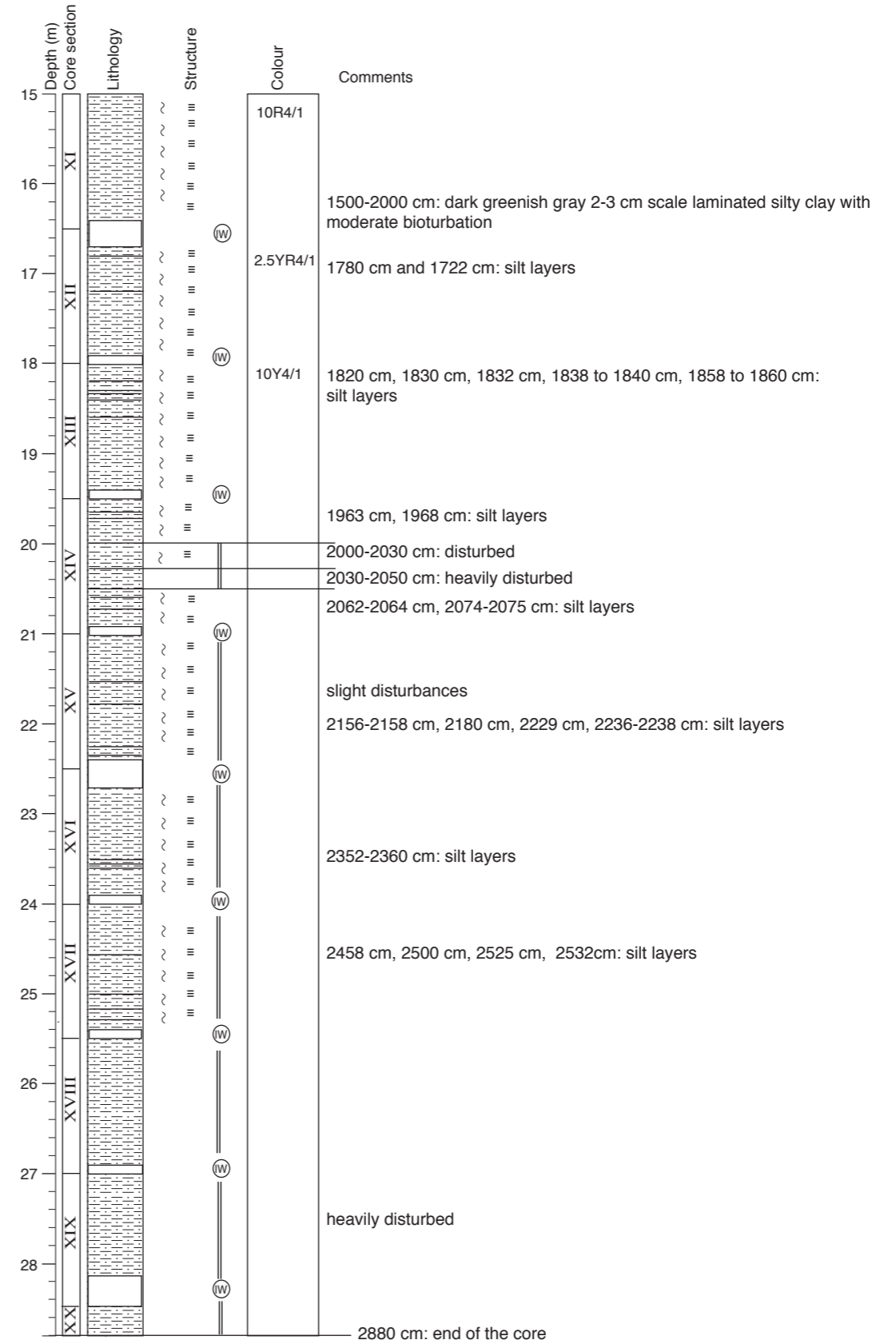
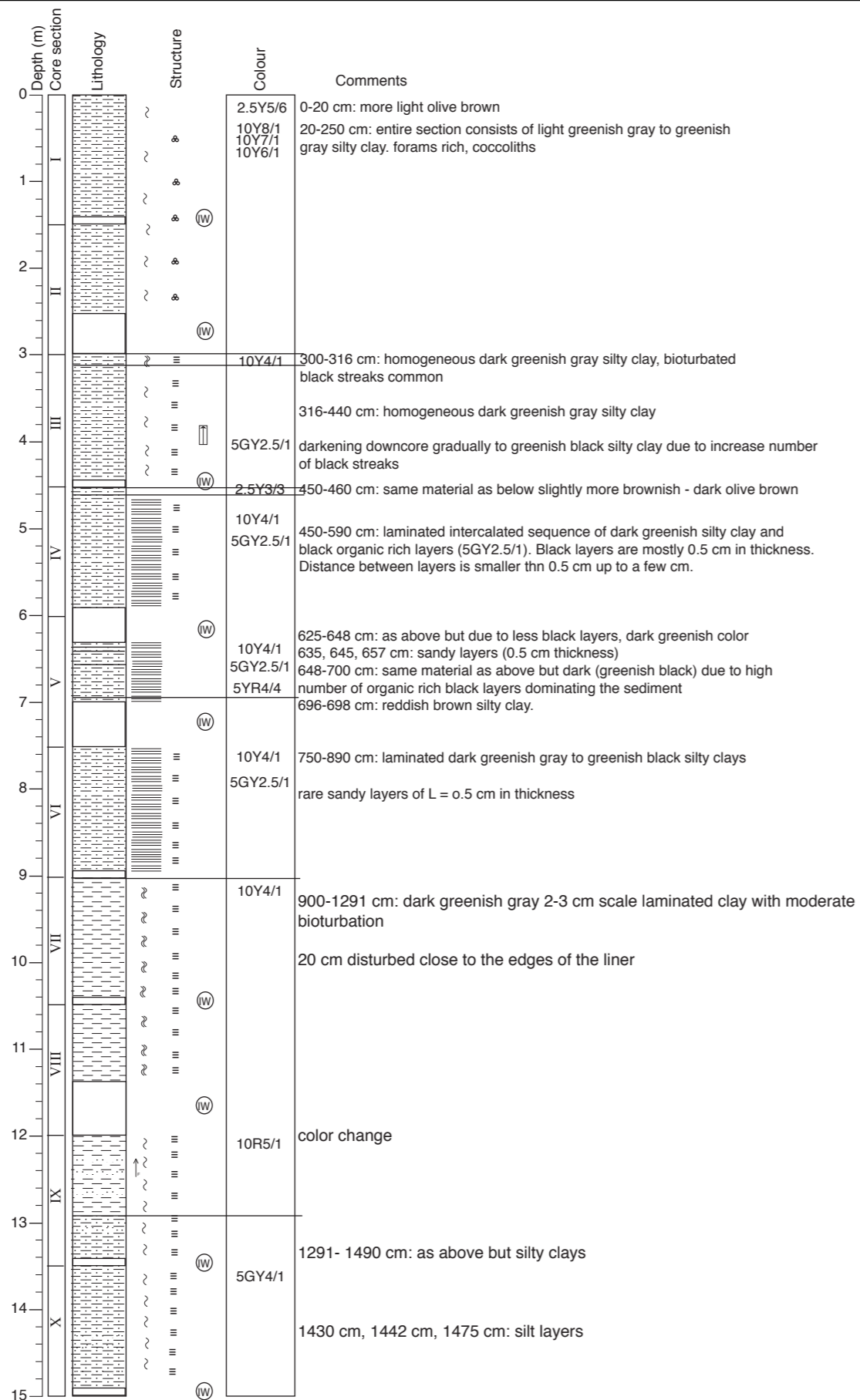
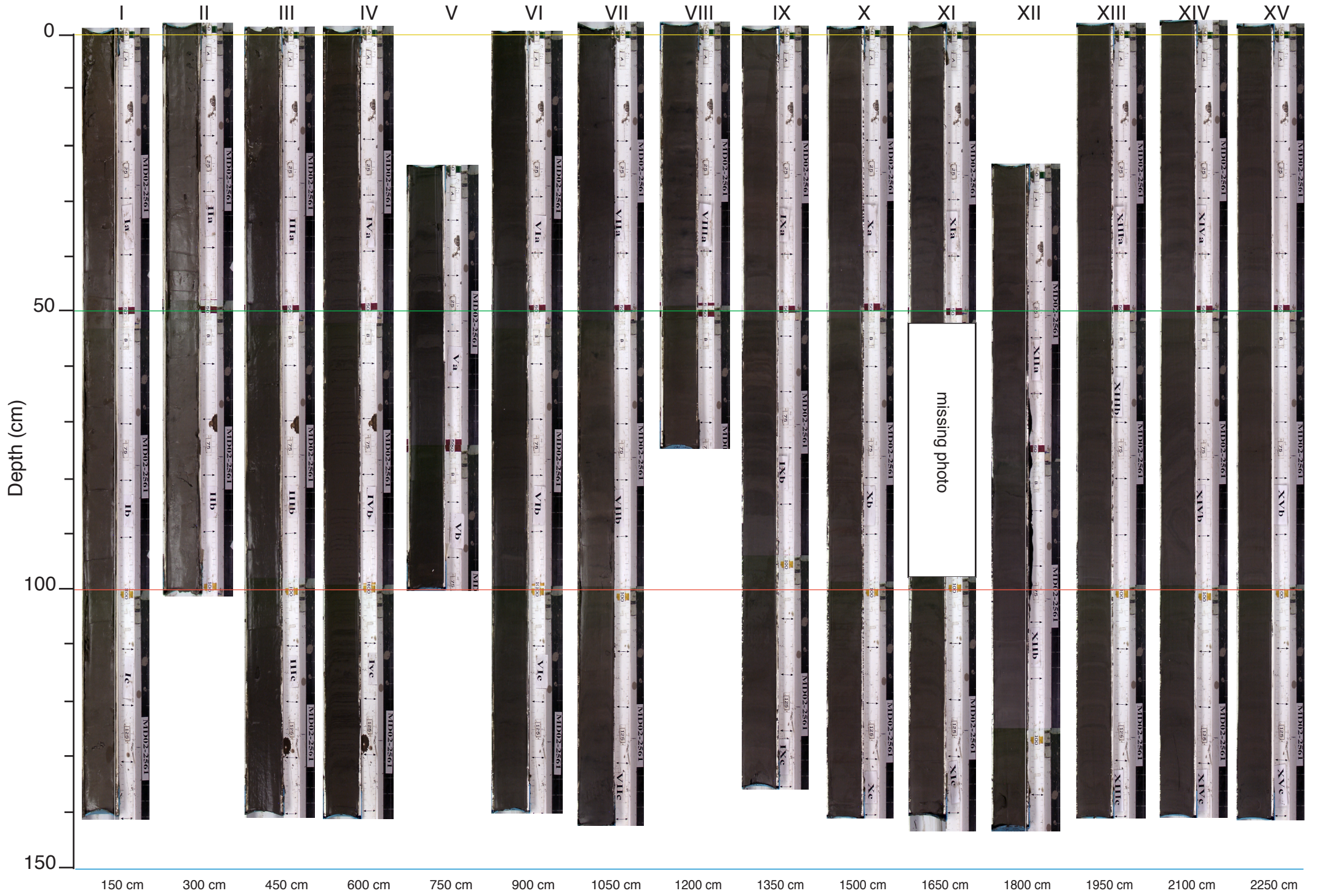


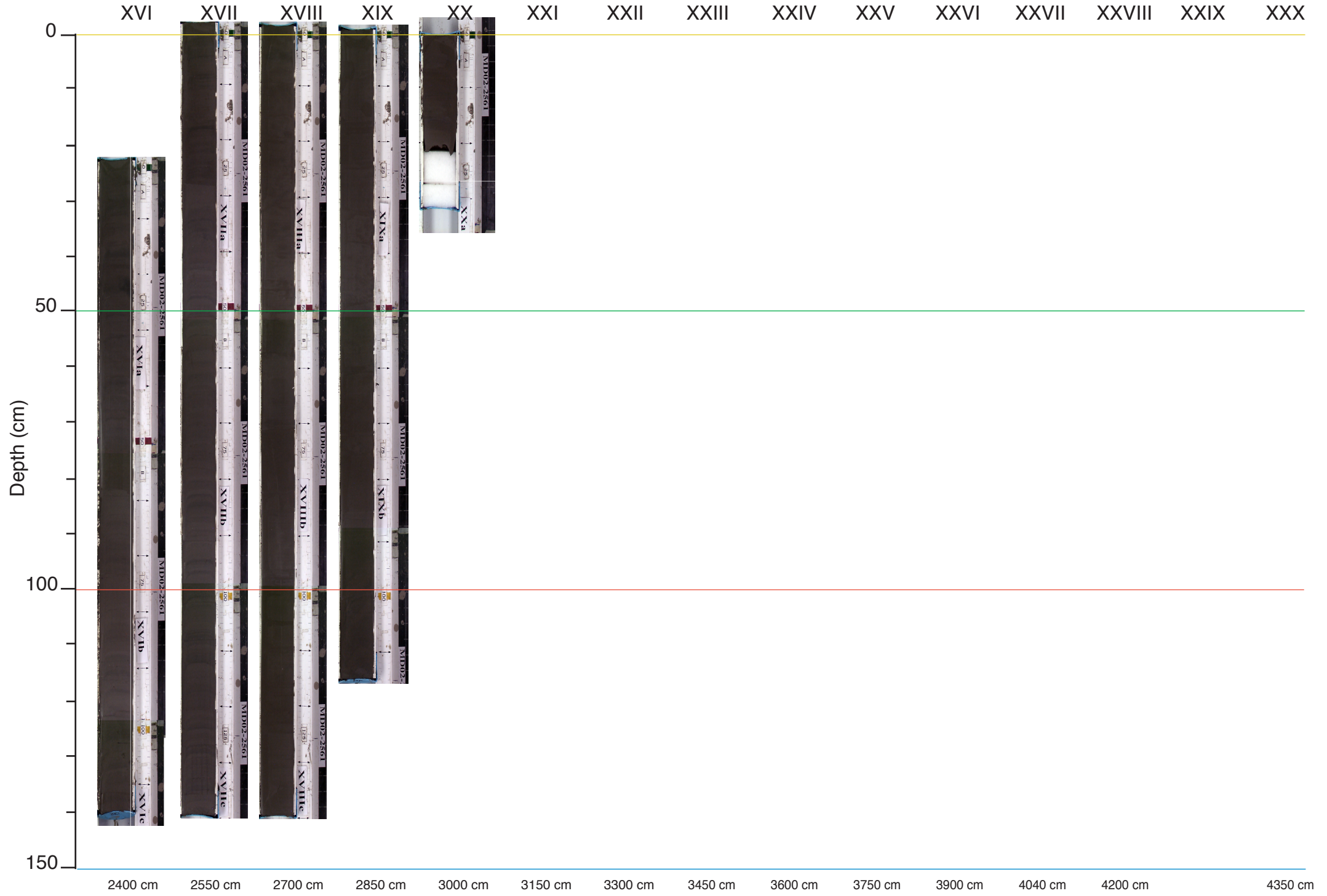
Core description



MD02-2561 (sections I to XV)



MD02-2561 (sections XVI to XX)



Day: 11/07/02
Latitude: 28°12.31 N
Water depth: 1268 m

GMT time: 22:26
Longitude: 89°01.21 W
Location: Kane Spur

Core number: **MD02-2561**

Corer type: Calypso core
Corer length: 35.95 m
Core length: 28.8 m

Observations

Corer condition: Good

Core condition: Good. From 2000 cm to the end of the core, it is slightly then heavily disturbed.

Sections and Sampling

Number of sections recovered and conditions:

20 sections of 1.5m were recovered; the last section measures 30 cm

A 10 cm section was taken on each section, and one more on sections II, V, VIII, IX, XV, XIX,

Onboard sampling and post cruise processing:

- Both the working and archive halves will be stored at Texas A&M University
- the 10 cm sections were taken for pore water analysis (microbiology, and SO₄⁻, Cl⁻, CH₄, ¹⁴C, DIC)
- 1 bag of core top sediment was taken
- MST magnetic susceptibility, gamma ray attenuation and p-wave measurements were made downcore, at a resolution of 2 cm. Colour measurements were taken every 2 cm.
- USGS core measurements and activities : Elec. Resist ; Vane Shear , water content, whole rounds for consol/triaxial (USGS-WH), Headspace Gas (USGS-Menlo Park), Thermal conductivity (Univ.Victoria)

Summary of physical and sedimentological observations

Dominant lithologies: 0-450 cm, light to dark greenish gray silty clay with moderate bioturbation and some foraminifers with decreasing content downcore. 450-900 cm dark greenish gray laminated silty clay. No foraminifer visible. 900-2880 clay on cm then silty clay, slightly bioturbated

Minor lithologies: Numerous silt layers at the bottom of the core, the first one being at 1430 cm.